

The BEST Visitor Attractions

GLANCE

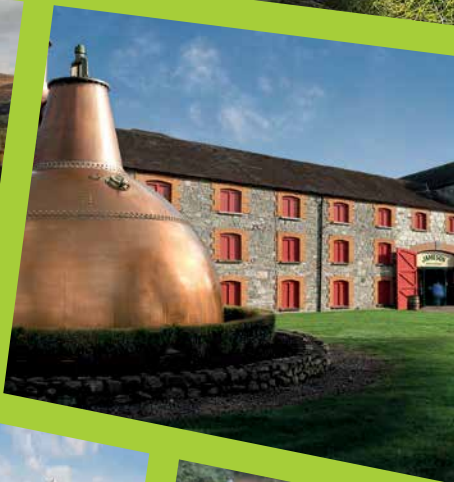
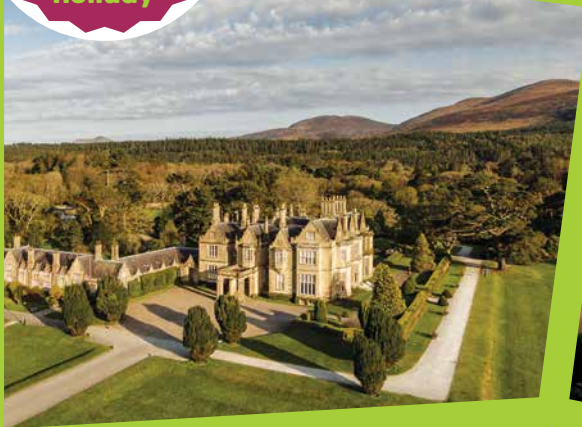
Your Daily Adventure

2020/21

FREE
Visitor
Guide

Ireland's
South

WIN
a Great
Lighthouses
of Ireland
holiday



DISCOVER IRELAND.IE

YourDailyAdventure.com

WIN

an Amazing Holiday Break at a



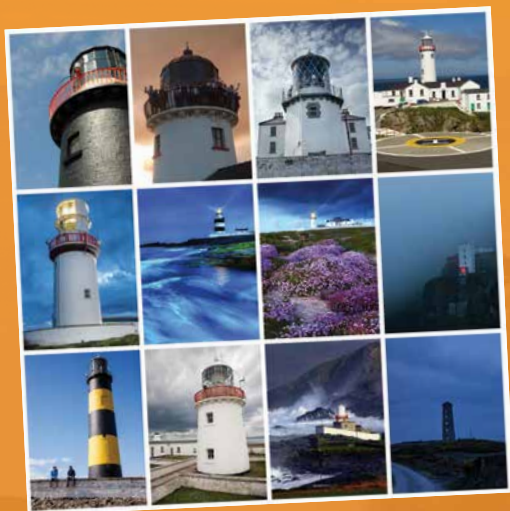
Take our **2-minute** online feedback survey, and you could win this fantastic prize.

This Daily Adventure guide provides you with lots of great ideas on things to do, see and enjoy during your Ireland holiday. We encourage and welcome reader feedback and, therefore, if you take our 2-minute **online survey** you will have a chance of winning a wonderful Lighthouse Holiday Break for up to 5 people sharing at a choice of locations around Ireland.

Take the Survey and Win

Our feedback survey will take you no more than 2 minutes to complete, and you can do so online via www.YourDailyAdventure.com/enter, OR you can scan the QR code above.

You must complete the online survey no later than Friday, October 9, 2020.



The Prize

A Stay at an Amazing Irish Lighthouse

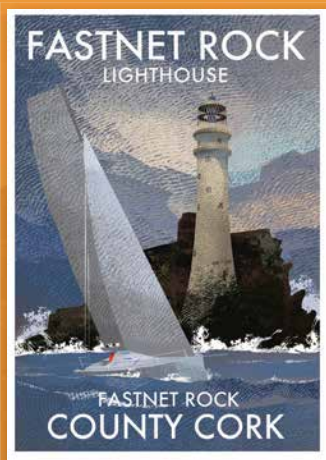
Great Lighthouses of Ireland features 14 amazing lighthouses perched high in dramatic locations around Ireland's stunning coastline. They are wonderful to visit, and visitors can also stay at eight of these lighthouses.

See www.GreatLighthouses.com.

The lucky winner, selected from those completing our survey, will get to enjoy an exhilarating 3-night stay, for up to 5 people sharing, at their choice of lighthouse locations. The prize break must be availed of within 12 months of winning.



Great Lighthouse of Ireland



10 posters to be won

Every entry will be entered in a draw to win one of 10 fabulous posters by award-winning author and illustrator, Roger O'Reilly. The collection of almost 90 lighthouses of Ireland is available on www.IrelandPosters.ie. As shown here the posters capture the uniqueness of each lighthouse setting. They are great for framing and bring wild and natural Ireland into any room where they hang.

Winners of the posters will also be selected on Friday, October 16, and they can select which lighthouse poster they wish to receive as their prize from IrelandPosters.ie.

Terms and Conditions

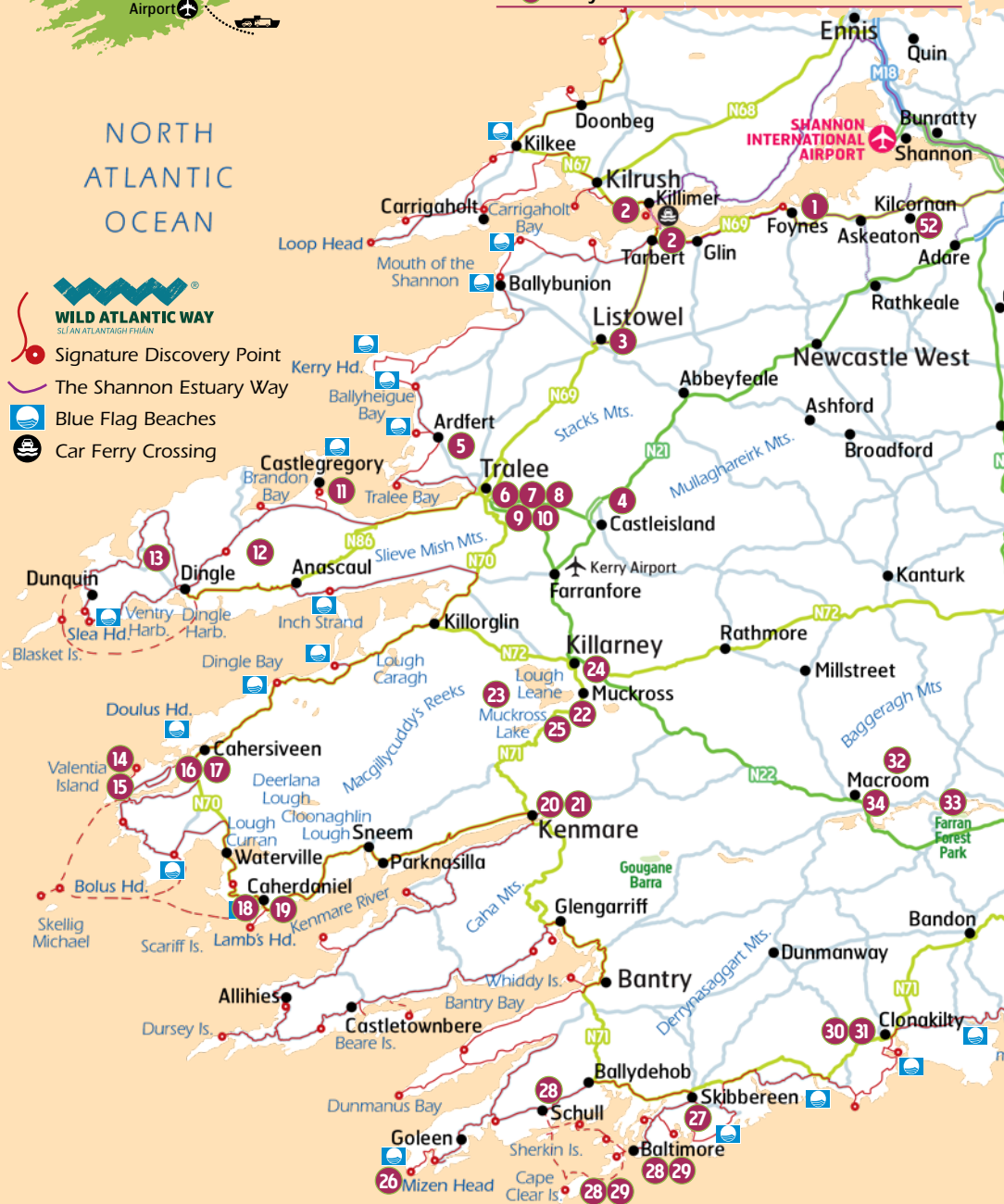
- You must be aged 18 or over to participate.
- The survey must be completed online no later than Friday, October 9, 2020.
- The survey may only be completed once. Entering more than once will disqualify from the opportunity to win the prize.
- One lucky winner will be selected from the survey returns and will be selected on Friday, October 16, 2020.
- The '3-night Lighthouse Holiday Break' must be availed of within 12 months of winning the prize (dates subject to availability at the selected lighthouse).

Welcome to Ireland's South



Contents

Ref	Attraction	See page...
1	Foynes Flying Boat & Maritime Museum	7
2	Shannon Ferry	8
3	Listowel Castle	8
4	Crag Cave	9
5	Ardfert Cathedral	9
6	Aqua Dome	10
7	Tralee Bay Wetlands Eco & Activity Park	10
8	Tralee	10
9	Bowling Buddies	11
10	Tralee Town Park	11
11	Castlegregory	11
12	Dingle Peninsula	12
13	Gallarus Oratory	12
14	Valentia Island Lighthouse	13
15	Valentia Island	13
16	Paddle & Sea	14
17	Daniel O'Connell Memorial Church	15
18	Caherdaniel	15
19	Derrynane House	16





Sustainable printing practices implemented. Please **pass on** or **recycle** when finished.

Ref	Attraction	See page...
20	Seafari	17
21	Kenmare	18
22	Muckross House	19
23	Killarney National Park	20
24	Buddies Play Centre	20
25	Torc Waterfall	20
26	Mizen Head Signal Station	21
27	Skibbereen Heritage Centre	21
28	Fastnet Rock Tour	22
29	Cape Clear Island Ferry Service	23
30	The Clonakilty Park Cinema, Golf and Adventure Centre	24
31	West Cork Model Railway Village	25
32	Ballyhass Aquaparks	25
33	Zipit Forest Adventures	26
34	Toy Soldier Factory	27
35	Blarney Castle and Gardens	28
36	Old Cork Waterworks Experience	29
37	Camden Fort Meagher	29

Ref	Attraction	See page...
38	Titanic Experience Cobh	29
39	Cobh, The Queenstown Story	30
40	Spike Island	30
41	Fota Wildlife Park	31
42	Fota House	31
43	Jameson Distillery Midleton	32
44	Ballycotton Lighthouse	33
45	Blue Flag Beaches Kerry & Cork	33
46	Youghal Clock Gate Tower	34
47	Perks Family Entertainment Centre	35
48	Youghal	35
49	Waterford Suir Valley Railway	36
50	Hook Lighthouse	36
51	Criostal na Rinne	37
52	Munster Vales	37
53	Stonehall Wildlife Park	37
54	Special Discoveries - Great Walking Trails	38
55	A-Z Index	39



For details on
**Attraction
Offers & Events**
visit
YourDailyAdventure.com

Admission Rates

The admission rates quoted in this publication are the normal rates for individual adult admissions, children and families. Many of the featured attractions and entertainments do offer special rates for groups, students and seniors. The rates quoted are the 2020 rates as submitted by the individual businesses.

Errors and Omissions

Every care has been taken in the compilation of this guide to ensure its accuracy and compliance with the consumer protection laws of Ireland. Glance Promotions cannot accept responsibility for errors or omissions, but where such are brought to our attention future editions will be amended accordingly.

Opening Dates and Times

Opening Dates and Times are subject to change and may vary throughout the seasons and by day of week. Establishments indicating 'open year-round' may still close, for instance, on Christmas Day. We recommend you verify dates and times directly with each featured establishment, particularly if travelling distances. Entertainments operate subject to demand and pre-booking is normally required.

The South of Ireland is a land of extremes, from brooding, isolated mountains, wild seascapes and craggy shorelines to some of the most beautiful gardens of subtropical shrubs and blooms you can find anywhere.

Cead Mile Fáilte a Hundred Thousand Welcomes – to Ireland's South

Stretching from the Irish Sea to the Atlantic Ocean Ireland's South is world famous for its great beauty, activity and history and for its wealth of great visitor attractions and entertainments. This free publication aims to enhance your visitor experience.

Plenty of choice

Variety is the essence of a good holiday and Ireland's South certainly provides a wide range of attractions and visitor experiences from historic houses and museums, castles and monastic sites, show caves to visitor farms & parks, island boat trips and gardens, through to distilleries and lighthouses.

Detailed information is included on each attraction and visitor experience including eircodes and sat nav co-ordinates, opening times and admission rates.

Enjoy!

Finally, we do hope that you take the time to explore the rich heritage and delights of Ireland's South and that your 'Daily Adventure' is a rewarding and enjoyable one.

Guides for other regions in Ireland are widely available.

We would welcome your feedback on the guide to info@glancepromotions.ie



This brand is a trademark of Fáilte Ireland and is used in this publications with their permission.



Publisher, John Rice.
Published by Glance Promotions,
Tipperary, Ireland.
Tel: 061-338588,
info@glancepromotions.ie
www.glancepromotions.ie
Design: OpticNerve.ie

Associate Member of



First European Member of



The International Association of
Visitor Information Providers





Foynes Flying Boat & Maritime Museum

Foynes, Co. Limerick

WILD ATLANTIC WAY
SUI AN ATLANTAIGH PHAIRT



Featuring Maureen O'Hara Exhibition



The award winning Foynes Flying Boat & Maritime Museum excitingly captures the unique story of how Foynes was once the centre of the aviation world through a comprehensive range of informative displays & interactive exhibits. Walk in the footsteps of JFK, Bob Hope, Eleanor Roosevelt and many other dignitaries, movie stars & refugees who landed in Foynes during World War II. Visitors have a once in a lifetime opportunity to board the world's only **Boeing 314 Flying Boat** and to try their hand at



being a pilot on our flight simulators.

New Maureen O'Hara Exhibition is dedicated to preserving the memory of Ireland's most famous movie star. It showcases a treasure trove of her personal and movie memorabilia including the iconic grey tweed jacket from 'The Quiet Man' & her **Oscar**.

Foynes is nestled along the banks of the Shannon Estuary, a recommended **Wild Atlantic Way Discovery Point**.

Visiting



Contact

Foynes Flying Boat & Maritime Museum
Foynes, Co. Limerick, V94 T6C1
Tel: 069-65416
info@flyingboatmuseum.com
www.flyingboatmuseum.com



Location

On N69, 37 km from Limerick City and 64 km from Tralee



SatNav: Latitude/Longitude
52.6115, -9.1097



Opening Times

Mid-Mar to Mid-Nov 09:30–17:00h
June, July & Aug 09:30–18:00h
Open Daily on above dates
Last entry 1 hour before closing



Admission Rates

Adult €12, Child €6 (Under 5 free)
Family(2+4) €30, Senior/Student €10
Group Rates Available



Information

Tourist Information Point
Visit the New Irish Coffee Lounge
1940s style Restaurant (O'Regan's)
Gift shop carrying an exciting range of unique giftware



Parking

Ample car and coach parking



Birthplace of Irish Coffee

Step back in time to 1943 & watch a 3D Holographic show recreating the night Chef Joe Sheridan invented Irish Coffee. Enjoy an Irish Coffee in O'Regan's Restaurant which offers home baked cuisine in a beautiful 1940's setting. Explore the history of the River Shannon by visiting the Maritime Museum & savour the panoramic views of the Shannon Estuary from the top of the Control Tower.



Shannon Ferry

Tarbert, Co. Kerry

Bridging the best of Ireland's West



From early morning as the mist descends the Shannon Estuary, to the setting of the sun in the late of the evening, ShannonFerry will

take you and your vehicle on this memorable 20 minute journey across the estuary linking the iconic tourist destinations of the Banner County of Clare to the Kingdom of Kerry.

This is a lovely experience for visitors who would like a short break on their journey to relax as they sail across the majestic Shannon Estuary. As the only vehicle ferry trip on the main spine of the Wild Atlantic Way, this invigorating journey allows you experience the rugged nature of land and sea as you breathe in the fresh salty sea air that encapsulates Ireland's Wild Atlantic Way.



Visiting

Contact

ShannonFerry Group
Killimer, Kilrush, Co. Clare, V15 FK09
Tel: 065-905 3124
enquiries@shannonferries.com
www.shannonferries.com

Location

Tarbert is on the N69 from Listowel, and the R551 to N69 from Ballyunion
Tarbert Eircode V31 X306

SatNav: Latitude/Longitude

52.5873, -9.3599 Tarbert
52.61503, -9.38081 Killimer

Ferry Times

Operates all year round, except Christmas Day. Ferry leaves Killimer every hour on the hour (07:00–19:00h) and Tarbert every hour on the half hour (07:30–19:30h) Half hourly sailings during high season months until 21:00h from Killimer and 21:30h from Tarbert

Admission Rates

Car single €20, return €30 (including passengers). Discounts available online @ shannonferries.com

Information

Visitor Centre, open 09:00–19:00h

Parking

Coach and car parking available



Listowel Castle

Listowel, Co. Kerry

A haven of history

Located in the historic town of Listowel this Castle stands on an elevation on a steep bank, overlooking the River Feale, above the location of a strategic ford.

A substantial part of the front of the castle survives consisting of two large, square towers of four storeys, standing almost to the original height of 15.3 metres, connected by a wall of the same height and linked together by an arch on one side.

A major programme of conservation works has been undertaken

at the castle including the provision of an external staircase to allow public access to the upper levels.



Visiting

Contact

Listowel Castle
The Square, Listowel
Co. Kerry, V31 RW98
Tel: 087-919 9725
info@heritageireland.ie
www.heritageireland.ie

Location

Situated in Listowel town centre

SatNav: Latitude/Longitude

52.4428, -9.4828

Opening Times

May 21 to Sept 18
Daily 10:00 to 18:00h
Last admission 45 mins before closing

Admission Rates

Free of charge

Information

Out of season opening for groups by prior arrangement

Parking

Car & coach parking close to site





Crag Cave

Castleisland, Co. Kerry

A great family day out!



Crag Cave is a natural, all-weather visitor attraction located at the gateway to Kerry. Formed of limestone, it is a colourful wonderland of stalagmites and stalactites. Discovered in 1983 and thought to be over one million years old, the cave system has dramatic sound and lighting effects.

A visit to Crag Cave will delight and enthrall all ages. Friendly guides will be pleased to outline the cave's origins, its many beautiful formations and introduce visitors to a world older than mankind.

Fun for all the family!

- Crazy Cave adventure centre suitable for children from 0–12yrs.
- Garden Restaurant serving healthy wholesome food & delicious home baking.
- Extensive Gift Shop.

Visiting



Contact
Crag Cave
Castleisland, Co. Kerry, V92 XK51
Tel: 066-714 1244
info@cragcave.com
www.cragcave.com



Location
2km outside Castleisland, Co. Kerry off the N21. 21km from Tralee and 23km from Killarney



SatNav: Latitude/Longitude
52.2475, -9.4445



Opening Times
Daily from 10:00–18:00h
Last tour half hour before closing
Mid-Mar to Oct, Open daily
Nov & Dec, Open Wed to Sun
Jan to Mid-Mar, Open Fri to Sun



Admission Rates
Adult €15, Children (4 years of age or under) Free; (5–16 years) €6
Family (2 adults and up to 4 children) €40. Crazy Cave €9 per child for two hours play. Combined Cave & Play Area €13 per child



Information
Play Area, Garden Restaurant and Gift Shop on-site



Parking
Free parking for cars and coaches



Ardfert Cathedral

Tralee, Co. Kerry



Steep yourself in history

Founded by St. Brendan in the 6th century, there are three churches, two ogham stones and a number of early Christian and medieval grave slabs on the site today.

The earliest building is the Cathedral which dates from the 12th to the 19th centuries. It has a fine Romanesque west doorway, a 13th century east window and a row of nine lancets in the south wall.

Two effigies of ecclesiastical figures of late 13th to 14th century which were mounted on either side of the

east window are on view in the South Transept. One of the two smaller churches is a fine example of late Romanesque and the other, Temple na Griffin, is a plain 15th century structure with an interesting carving of a wyvern on one of the windows.



Visiting



Contact
Ardfert Cathedral
Ardert, Tralee
Co. Kerry, V92 KR7P
Tel: 066-713 4711
ardfercathedral@opw.ie
www.heritageireland.ie



Location
10km from Tralee on R551 (Tralee to Ballyheigue Road)



SatNav: Latitude/Longitude
52.3287, -9.7817



Opening Times
Apr 02 (from 12:00h) to Sept 30 (15:00h)
Daily 10:00–18:00h
Average length of visit: 1 hour
Last admission 45 minutes before closing



Admission Rates
Adult €5
Senior/Group €4
Child/Student €3
Family €13



Information
Guided tours available on request



Aqua Dome

Tralee, Co. Kerry

**For a Splashing good time...
Just Let Yourself Go...!**

One of Ireland's Largest Indoor Waterworlds, offering something for everyone! Enjoy the waves, lazy river, flume slide, children's pools, whirlpool spas, outdoor falling rapids, bubble seat, gushers, gysers, sprays and adult only Vitality Spa which is a haven of tranquillity & relaxation. For those who do not wish to get their feet wet there is a gym and an 18 hole miniature Aqua Golf to enjoy!



Visiting



Contact

The Aqua Dome, Dan Spring Road
Tralee, Co. Kerry, V92 T6TW
Tel: 066-712 8899 / 712 8755
24 hour hotline: 066-712 9150
info@aquadome.ie
www.aquadome.ie



SatNav: Latitude/Longitude
52.2636, -9.7107



Opening Times

Open Year Round except for 2 weeks in December. See website
Mon to Fri, 10:00-22:00h
Sat & Sun, 10:00-19:00h



Admission Rates

Adult (18+) €16 includes Gym & Vitality Spa, Child (U18) €13, Child (U2) FREE
10% discount for families. Adult Golf €6
Child (U18) Golf €5, Family (2+2 or 1+3) Golf €18



Parking

Extensive free parking for cars & coaches

Tralee Bay Wetlands Eco & Activity Park

Tralee, Co. Kerry

Discover the Joy in Nature & Activity.

Combining fun with educational and environmental activities, suitable for all ages including; 20 metre viewing & observation tower, guided & self-guided nature and natural heritage tours, safari boat trips, bird hides and a nature board walk. Light Watersports Lake offering Pedalo & Rowing Boats & Water Zorbing. Outdoor Rock Climbing available. Seasonal Camps, talks, workshops, lectures and parties available. Popular Lakeside Café.



Visiting



Contact

Tralee Bay Wetlands Eco & Activity Park
Ballyard Rd, Tralee, Co. Kerry, V92 HH57
Tel: 066-712 6700
info@traleebaywetlands.org
www.traleebaywetlands.org



SatNav: Latitude/Longitude
52.2628, -9.7163



Opening Times

Open Daily Mar to Oct 10:00-17:00h
Nov to Feb See website for winter schedule



Admission Rates

Self Guided/Guided Tours
Adults €5/€10, Child €3/€5
Senior/Student €5/€8, Family €20/€32
Pedalo Boat Hire €15 (up to 5 persons)
Rowing Boat Hire €10 (2 persons)
Water Zorbing €9
OutDoor Climbing €10/€15



Parking

Free Car & Coach Parking

Tralee

Tralee, Co. Kerry

Tralee—the capital of Kerry sits in the shelter of Tralee Bay, with a panoramic view of the sea and mountains stretching into the west. There is plenty to see and do for all the family. The town has developed a range of quality all weather visitor attractions unmatched anywhere in the country. Tralee is also famous for the Rose of Tralee International Festival, which is held annually in August.



Visiting



Contact

Tralee Tourist Office
Ashe Memorial Hall
Denny Street, Tralee
Co. Kerry, V92 HW92
Tel: 066-712 1288
www.tralee.ie



SatNav: Latitude/Longitude
52.2668, -9.7062



Information

Great range of accommodation, restaurants, cafés and shopping available



Parking

On-street pay & display, various car parks





Bowling Buddies

Tralee, Co. Kerry

Bowling Buddies entertainment centre offers ten bowling lanes, cosmic and bumper bowling, an exciting arcade, Skywalker high ropes and a relaxing café which offers great food & coffee. The exciting party packages are great value. Group bookings and corporate outings are fun packed. For an experience you won't find anywhere else—Buddies is best for play & parties.



Visiting



Contact

Bowling Buddies
Unit 2 Manor Business Park
Tralee, Co. Kerry, V92 TW13
Tel: 066-719 7007
bowlingbuddiesoffice@gmail.com
www.bowlingbuddies.ie



SatNav: Latitude/Longitude

52.2621, -9.6746



Opening Times

Mon to Sat: 11:00–22:00h
Sun: 12:00–20:00h
Opening hours vary during school term, see website



Admission Rates

Timed Bowling:
1hr bowling max 6 players, €40
30 mins bowling max 3 players, €24
Game Bowling: Adult €9, Child €6.50
Skywalker: Adult €12, Child €10



Parking

Free car park

Tralee Town Park

Tralee Co. Kerry

Located in the heart of Tralee town centre this 35 acre urban park, complete with a playground and sensory garden is the perfect picnic spot, the ideal haven to step away from the hustle and bustle of the busy streets and take time out. It plays host each year to the Tralee Garden Festival, a free midsummer festival that offers a fun filled weekend to young and old!



Visiting



Contact

Tralee Tourist Office
Denny Street, Tralee
Co. Kerry, V92 HW92
Tel: 066-712 1288
www.tralee.ie



SatNav: Latitude/Longitude

52.2664, -9.7042



Opening Times

All Year



Admission Rates

Free



Information

Sensory Garden, Playground. Home to over 30 varieties of roses



Parking

Limited on street parking or town centre car parks

Castlegregory

Castlegregory, Co. Kerry

Castlegregory is situated on the stunning Dingle Peninsula and was named after a castle built by Gregory Hoare in the 16th century. The village is located near a number of beaches which makes it a hive of activity during the summer. Lots to do including diving, snorkelling, golfing, fishing, windsurfing and more! The village is located on the Dingle Way walking route and is close to many great mountain walks including Conor Pass, Mount Brandon and Beenoskee Mountain.



Visiting



Contact

Castlegregory Visitor Information Centre
Castlegregory
Co. Kerry
Tel: 066-713 9422
www.castlegregorykerry.com



SatNav: Latitude/Longitude

52.2548, -10.0220



Information

A range of accommodation, restaurants, cafés & bars available



Dingle Peninsula

Dingle, Co. Kerry



Experience the magic of the Dingle Peninsula

The Dingle Peninsula stretches 48 km into the Atlantic Ocean on Ireland's south-west coast with The Blasket Islands lying further west of the peninsula. Peace and tranquillity are synonymous, with life moving at an unhurried pace in the Gaeltacht (Irish speaking) area, and a strong tradition of music, poetry and storytelling. Famed for its rugged beauty and indigenous cultural heritage, the area has something to offer every visitor. Visit great beaches offering the excitement of wind surfing, or travel over the Conor Pass, the highest mountain pass in Ireland offering magnificent views. Visit

the pretty fishing port of Dingle and their most famous resident "Fungi", a friendly bottlenose dolphin that has lived in the harbour since 1984. One of Ireland's highest mountains Mount Brandon, and Sleat Head located at the tip of the Peninsula offer dramatic scenery.



Visiting

Contact
Dingle Tourist Office
The Quay, Dingle
Co. Kerry, V92 A6XT
Tel: 066-915 1188
www.dingle-peninsula.ie

Location
50km from Tralee
66km from Killarney

SatNav: Latitude/Longitude
52.2391, -9.8412

Opening Times
Dingle Tourist Office
open seasonally, Apr to Oct

Information
The peninsula has a number of fishing and market towns and villages, each with their own character, history and facilities

Parking
Free parking for cars and coaches in towns and on routes

Gallarus Oratory

Gallarus, Co. Kerry



Head for Dingle Peninsula



One of the most famous landmarks on the Dingle Peninsula and situated close to Gallarus Castle, the Oratory is completely made of stone and in some ways it resembles an upturned boat. It is extremely well preserved and several

archeological artefacts are to be found on the grounds of the Oratory. In close proximity is Gallarus Castle which was built by the Fitzgeralds and is one of the few surviving castles on the Dingle Peninsula. It is a four-storey tower with a vaulted ceiling on the fourth floor; none of its battlements remain.

The tower was accessed originally on the 1st floor and there was a two storey defensive structure to the front, now gone but evidence of it can still be seen on the external wall.

Visiting

Contact
Gallarus Oratory
Gallarus, Baile na nGall
Co. Kerry, V92 Y028
Tel: 066-915 5333
gallarusoratory@gmail.com
www.heritageireland.ie

Location
10km from Dingle (R559)

SatNav: Latitude/Longitude
52.1729, -10.3493

Opening Times
Year round access to the Oratory however the visitor centre closes for the winter months

Admission Rates
Local service charge applies. Call 066-915 5333 for further details

Information
Restricted access for visitors with disabilities

Parking
Very limited public parking. Privately owned car park available for an additional charge



Valentia Island Lighthouse

Valentia Island, Co. Kerry

A Great Lighthouse of Ireland



Valentia Island Lighthouse and the 17th century Cromwell Point Fort has stood against the sea and invaders for hundreds of years. Now, this gleaming white lighthouse on beautiful Valentia Island looks out across some of the most spectacular sights along the Wild Atlantic Way. There's much to enjoy in a visit

to this lighthouse. Take a tour of the lighthouse tower and balcony. Be blown away by the dramatic scenery and big weather! Soak up the stories and the science as you learn about the people and technology that have guided ships safely home from sea over the years.

Valentia Island Lighthouse offers a great day out: fascinating history, inspiring views and a unique insight into island life.

To plan more visits to Great Lighthouses of Ireland see www.greatlighthouses.com

Visiting



Contact
Valentia Island Lighthouse
Cromwell Point, Valentia Island
Co. Kerry, V23 K299
Tel: 0666-947 6985
www.valentiaisland.ie
www.greatlighthouses.com



Location
Located on the Skellig Coast on the Iveragh Peninsula adjacent to the Ring of Kerry



SatNav: Latitude/Longitude
51.9320, -10.3226



Opening Times
Mar to Sep:
10:30–18:00h (last tour at 17:30h)
Oct:
10:30–17:30h (last tour at 17:00h)



Admission Rates
Adult €5
Child €2.50
Senior / Concession €4.50
Family €15
Group Rates available



Information
Visitor Centre, Guided tours, Toilets, Free WiFi



Parking
Free



Valentia Island

Iveragh Peninsula, Co. Kerry

Paradise Island of Ireland

Valentia Island is one of Ireland's most westerly points and has an extraordinary history which is reflected in the landscape, architecture, culture and people of the place. It lies off the Iveragh Peninsula in the southwest of County Kerry. Access to the island is via the Maurice O'Neill Memorial Bridge at Portmagee or by car ferry from Reenard Point to Knightstown which operates from April to October. Some of the must see locations are The Slate Quarry, The Lighthouse, Knightstown, Geokaun Mountain, Bray Head and The Skellig Islands. This is the idyllic setting for sailing, fishing, kayaking, diving, coasteering, cycling, walking, rock climbing and lots more. There's always



lots happening on the island, food and music festivals, triathlons and children's events.

Visiting



Contact
Valentia Island
Iveragh Peninsula
Co. Kerry, V23 K299
www.valentiaisland.ie



Location
On the N70 Ring of Kerry from Cahersveen to Waterville



SatNav: Latitude/Longitude
51.0909, -10.3543



Information
Accommodation and dining options available (Restaurants and Cafés), museums, walking trails, children's activities, boat tours, sightseeing, history and heritage, bird watching, arts & crafts, tropical gardens and much more





Paddle & Sea

Cahersiveen, Co. Kerry



Slow Adventure Awaits

Guided paddling tours along the beautiful South West Kerry coastline of Cahersiveen. Friendly qualified instructors will help bring you on your adventure and ensure you have an engaging experience.

As you explore the Wild Atlantic Way of Cahersiveen you will immediately see some important landmarks such as The Old Barracks, Ballycarbery Castle and Knocknadobar Mountain. Ideally located in the Kerry international Dark Sky reserve. This is a Gold Tiered Reserve which means the night sky is high quality and is free from light pollution. Guided paddling tours under the night sky will leave you in awe of the sheer beauty Kerry has to offer.

Try sea kayaking or canoeing to bring you around the scenic Fertha estuary or even out to the mouth of the Valentia harbour. Enjoy the views from your sea kayak or canoe as you create memorable memories out on the water.

If you want more adventure then how about the increasingly popular sport of Stand Up Paddle boarding. Explore the water on your feet and see Cahersiveen from a whole new angle. This sport is fun for all ages and abilities. No previous experience is required to join in the SUP sessions!



Cahersiveen

Located along the Wild Atlantic Way and the famous Ring of Kerry, Cahersiveen is best known as the town that climbs the mountain and looks upon the sea! Within the vibrant town, friendly locals will welcome you. There is a wide range of cafés, pubs, restaurants and accommodation in Cahersiveen.

Visiting



Contact

Paddle & Sea
Cahersiveen Marina
Cahersiveen
Co. Kerry, V23 Y925
Tel: 083-389 3972
info@paddleandsea.com
www.paddleandsea.com



Location

Cahersiveen Marina in Cahersiveen



SatNav: Latitude/Longitude
51.9479, -10.2315



Opening Times

Mon to Sun 10:00–17:00h
Activities last from 2 to 3 hours
Sunset & Night Paddles: please
telephone or email for further details



Admission Rates

Prices vary depending on activity.
See website for further details



Information

Please arrive 15 minutes before your session. Please bring: An old pair of shoes, swimwear, towels and plenty of snacks and water
On-site facilities include toilets, changing rooms, showers and a cup of tea!



Parking

Free Parking





Daniel O'Connell Memorial Church

Cahersiveen, Co. Kerry

WILD ATLANTIC WAY
SUI AN ATLANTAIGH PHAIRN

The only Church in Ireland named after a Layman

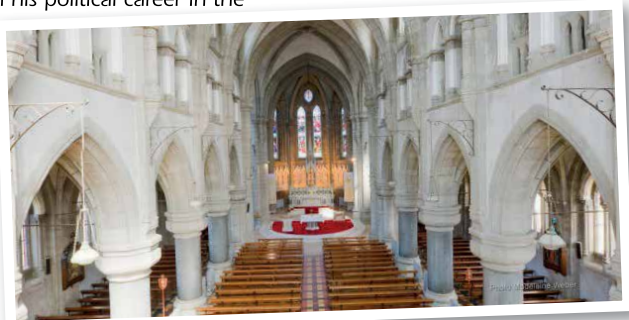
The Daniel O'Connell Church is located in the parish of Cahersiveen, which is home to approx 1,000 families and is located on the spectacular Ring of Kerry.

The church bears the name of Daniel O'Connell, "The Liberator", who was born in Cahersiveen and who worked in his political career in the

early 19th century to bring about Catholic Emancipation.

It is unique in being the only Church in the country, named after a layman.

While in the area why not pay a visit to the towns heritage centre which is housed in a former Royal Irish Constabulary Barracks.



Visiting



Contact

Daniel O'Connell Memorial Church
Cahersiveen, Co. Kerry, V23 EH59
Tel: 066-947 2210
cahersiveen@dioceseofkerry.ie
www.dioceseofkerry.ie



Location

In the town centre of Cahersiveen



SatNav: Latitude/Longitude
51.9462, -10.2237



Admission Rates

Free of charge



Information

Mass times: Mon to Fri 11:00h
Sat 19:30h, Sun 11:30h



Parking

Car park facilities available



Caherdaniel

Ring of Kerry, Co. Kerry

Paradise of pristine land, sea and air



Teetering on the edge of the Eurasian landmass, Caherdaniel is situated on the peninsular tip of Ireland's Southwest Coast. Washed by the expansive unadulterated Atlantic Ocean it is an enchanting and unstained paradise of pristine land, sea and air. To walk about its deserted coastal beaches and flower-decked meadows or to climb up into its wild, heathered glens and rolling mountain heaths is an

experience that's unmatched on mainland Europe.

The area is rich in cultural history too with Derrynane House and National Park, home of Daniel O'Connell The Liberator

(1775-1847), and Staigue Fort at Castle Cove, probably Ireland's finest example of a Stone Fort. Swimming, diving, kayaking, canoeing, surfing, water-skiing, and of course, sailing are available in the safe enclosed harbour. If you are looking for a holiday that combines the great outdoors with heritage and history then Caherdaniel is the perfect choice for you.

Visiting



Contact

Caherdaniel
Ring of Kerry
Co. Kerry



Location

Located on the Ring of Kerry between the towns of Waterville and Sneem



SatNav: Latitude/Longitude
51.7689, -10.0995



Information

Derrynane Beach close by offers a range of watersports including wind surfing and sailing





Derrynane House

Caherdaniel, Co. Kerry



Visit the home of the Great Liberator



Derrynane House is the ancestral home of Daniel O'Connell, lawyer, politician and statesman. O'Connell was one of Ireland's leading figures, known by the nation as the Great Liberator. (The main street in Dublin, Ireland's capital city, is called after him). Situated

on 120 hectares of parklands on the scenic Kerry coast, both the house and grounds have been preserved and are open for the public to enjoy.

The tranquil plantations and garden walks were laid out in the 18th & 19th centuries, while the house displays many relics of O'Connell's life and career. The main area of the gardens, set inland and to the North of the house, can be reached through a tunnel under the road. Universal access for visitors with disabilities.

Visiting



Contact
Derrynane House
Caherdaniel, Co. Kerry, V23 FX65
Tel: 066-947 5113
derrynanehouse@opw.ie
www.heritageireland.ie



Location
3.5km from Caherdaniel
(off N70—Ring of Kerry)



SatNav: Latitude/Longitude
51.7625, -10.1305



Opening Times
March 17 to Sept 30
Daily 10:30–18:00h
Oct 01 to Nov 01
Daily 10:00–17:00
Nov 07 to Dec 13
Weekends only 10:00–16:00h
Last Admission 45 minutes before closing.



Admission Rates
Adult €5, Senior/Group €4
Child/Student €3, Family €13



Information
Outdoor self-guiding trail



Parking
Car & coach parking



OPW

**BUY AN OPW HERITAGE CARD
& EXPLORE IRELAND'S
WONDERFUL HERITAGE**



Jerpoint Abbey

Castletown House

Donegal Castle

Dún Aonghasa

Free admission to more than 45 of Ireland's finest heritage sites

Unlimited access for up to one year

€40	€30	€10	€90
Adult	Senior	Child/Student	Family

Heritage Cards can be purchased at participating heritage sites

by phone: 01-647 6592 / Lo Call 1850-600 601

Find us on Facebook



Full details: www.heritageireland.ie





Seafari

Kenmare, Co. Kerry

WILD ATLANTIC WAY
SUI AN ATLANTAIGH PHAINN



Fun Eco-Nature Seal and Eagle Watching Cruises



Seafari is a Top Class, Award winning, Fun voyage of discovery. A friendly family-run river cruise on a comfortable, stable and fully equipped passenger vessel. The humorous and friendly captain and guide will give you an informative tour, cruising around the many islands and the bay's sheltered waters between the Beara and Iveragh Mountain Peninsulas.

See tropical plants nurtured by the gulf stream, prolific birdlife living off the productive sea-water, such as the magnificent White Tailed Sea Eagles, and observe from close-up Ireland's largest and most spectacular seal colony where 300 or more seals make their home in the paradise that is the Kenmare River.

There are lots of photo opportunities, be sure to bring your camera! People like to sit outside while watching seals so bring pullovers and jackets. Everything else is provided, even a tot of rum for the adults. Full toilet facilities, no seasickness guarantee—Reservations essential—especially during low season.

Have a great trip!

When you travel with Seafari, they want you to enjoy your trip at its best, which is why they have a number of complimentary features during the two hour, ten mile cruise around the River and Islands. Free use of binoculars, charts and books. Complimentary sweets, lollipops, tea, coffee, rum tot and cookies. Entertainment for all including kids' face painting/colouring, traditional music and song. Very special rates for groups (up to 100), coaches and parties.

Visiting



- Contact**
Seafari
Kenmare, Co. Kerry, V93 CSC9
Tel: 064-664 2059
book@seafari.ie
www.seafari.ie
- Location**
Seafari is located on the pier at the end of Henry Street in Kenmare, on the N71
- SatNav: Latitude/Longitude**
51.8733, -9.5884
- Sailing Times**
April to November. Times vary due to tides. Consult your local tourist office /hotel reception/website/ facebook/Seafari office
- Admission Rates**
Adult €25, Family (2 adults and 2 children under 12) €65. Extra children €10. Children under 2 Free
- Information**
Soft drinks, snacks and souvenirs sold on board. Evening BBQ
Traditional Music Cruises
- Parking**
Plenty of parking at the pier



SEAFARI



Kenmare

Kenmare, Co. Kerry

WILD ATLANTIC WAY
SÍLÁN AN ATLANTAIGH PHAÍN



Escape to Living

Kenmare is a haven of tranquility, gourmet food, superb accommodation and breathtaking scenery in one of the most natural, unspoilt environments in Europe. Cradled in the heart of Kenmare Bay, the picturesque town of Kenmare is the perfect location from which to discover the South West of Ireland, linking the internationally famous Ring of Kerry with the rugged Ring of Beara.

Founded in 1670, the Irish name of the town Neidín, means little nest, and though many generations have passed since then, the unique charm and inherent beauty of the town remains unchanged. In fact its historical, cultural and environmental significance resulted in Kenmare being bestowed with the title of Kerry's first Heritage Town. There are very few towns in Ireland where you can enjoy

the simple pastime of just browsing shops and streets at an easy and thoroughly relaxing pace, but Kenmare is one. Within walking distance of the main street are wooded areas and boat trips on Kenmare Bay with Seafari.

The Ring of Kerry, known all over the world, follows the coastline of the Iveragh Peninsula. It is one of the most dramatic scenic drives in the country and makes a most exciting day tour. Along the 175km route are picturesque villages, an abundance of historical landmarks, spectacular viewing points, sandy coves and beaches. The unspoiled Ring of Beara and West Cork are to the south of Kenmare. Its rugged beauty is beyond compare. Traffic is minimal and it abounds with archaeological sites, spectacular views, small fishing ports, and historic gardens and houses.

The Boathouse Bistro

The Boathouse at Dromquinna Manor is one of those places that you stumble upon and never forget. On the Ring of Kerry, and just outside Kenmare, it is located on the waterfront in a boathouse dating from the 1800s. The Gin Menu is extensive and lists gins from all over the world, while the food in The Boathouse perfectly matches the place, including calamari and a potted crab dish that may just entice you back. There is a Terrace for sunny days while inside is all corners and nooks where one can hide. Sneem Road, Kenmare, Co. Kerry. Tel: 064-664 2889

Visiting



Contact

Kenmare Tourist Office (Seasonal)
Kenmare Heritage Centre
Kenmare Courthouse, The Square
Kenmare, Co. Kerry, V93 KT1K
Tel: 064-664 1233
kenmaretio@failteireland.ie
www.kenmare.ie



Location

On the Ring of Kerry, Kenmare is also a great touring base for West Cork, and is approximately 2 hours from Cork and 3 hours from Shannon airports



SatNav: Latitude/Longitude
51.8804, -9.5835



Information

Whether your visit to Kenmare is for a stroll, a lunch, a leisurely day out, a few days break, or an entire holiday Kenmare and its range of accommodation, restaurants, shops, and pubs will refresh you



Parking

On street and off street car and coach parking available throughout the town





Muckross House, Gardens and Traditional Farms

Killarney, Co. Kerry



Discover the magic of Muckross...



Muckross House, Gardens & Traditional Farms is the

jewel in the crown of the spectacular Killarney National Park. If you are looking for natural beauty, and spectacular photographs to show off to your family and friends when you get home, then this is a "must see" on your vacation to Ireland. There is something to suit all the family!

The elegant, charming furnished rooms of **Muckross House** portray the lifestyles of the Gentry. You can also experience the working conditions of the servants employed in the house. After your guided tour, get lost in the beautiful, well-maintained gardens that surround Muckross House.

To experience rural life in Ireland in the 1930s and 1940s visit the

Muckross Traditional Farms. Explore at your own leisure as your route through the farms is self-guided, or alternatively avail of the free complimentary coach with universal access that regularly circles the farm. Watch the farmers work in the fields, meet the mná an tí, admire the new arrivals in the small farm petting area, or stop off in the Woodland playground complete with a range of swings and slides to keep your little ones entertained.



Muckross Craft Centre & Garden Restaurant

Muckross Garden Restaurant offers delicious buffet lunches, light bites or freshly baked, mouth-watering pastries from the on-site bakery. Vegetarian and gluten-free options available on request. Dine in the outdoor conservatory to enjoy views of the Victorian glasshouses and relish the array of colours on display in the Walled Garden. Muckross Craft Centre offers a large range of high quality souvenirs; outdoor clothing brands including Regatta, Lighthouse, TargetDry, Jack Murphy; contemporary and traditional knitwear by Aran Knitwear, Westend and Irelands Eye and official merchandise of Muckross including Weaving, Pottery and Bookbinding and the Muckross House guide book.

Visiting



Contact
Muckross House,
Gardens and Traditional Farms
Killarney National Park, Killarney
Co. Kerry, V93 CK73
Tel: 064-667 0144
muckrosshousetours@ahg.gov.ie
www.muckross-house.ie



Location
Located 5.6km from Killarney off the N71 (Kenmare Road)



SatNav: Latitude/Longitude
52.0183, -9.5010



Opening Times
Open year round
Daily 09:00–17:30h
July to August: 09:00–19:00h
Farm open mid-March to April
weekends & bank holidays only
Daily May to October



Admission Rates			
	House	Farms	Joint
Ticket			
Adult	€9.25	€9.25	€15.50
Group/Senior/Student (over 18yrs)	€7.75	€7.75	€13.50
Child (3–12yrs)	Free	€6.25	€6.25
Child (13–18yrs)	€6.25	€6.25	€10.50
Family (2A+2C)	€29.00	€29.00	€40.00
Family (2A+3C)	€33.00	€33.00	€45.00



Information
Gift Shop, Restaurant, Wheelchair access, Playground, Shuttle bus available from Killarney town—various pick-up points. Admission to Muckross House is by guided tour only. Last admission to House and Farms is 1 hour before closing.



Parking
Free parking for cars, coaches and campervans.





Killarney National Park

Killarney, Co. Kerry

South and west of the town of Killarney is an expanse of rugged mountainous country. This includes the McGillicuddy's Reeks, the highest mountain range in Ireland which rise to a height of over 1000 metres. At the foot of these mountains lies the world famous lakes of Killarney. Here where the mountains sweep down to the lake shores lies the 10,236 hectare (26,000 acres), Killarney National Park. There are several walking trails, check out the website for further information.



Visiting



Contact

Killarney National Park
Killarney
Co. Kerry, V93 HE3C
Tel: 076-100 2620
knpeducationcentre@ahg.gov.ie
www.killarneynationalpark.ie



SatNav: Latitude/Longitude
52.0568, -9.5082



Admission Rates
Free Admission



Information
Take only pictures and 'Leave No Trace'

Buddies Play Centre

Killarney, Co. Kerry

Buddies Play Centre is a household name, known for its friendly staff and high standards. With a designated toddler area, sports area, a new motion interactive area and a relaxing cafe with full menu & great coffee. The party rooms amaze everyone, a Pirate Ship, Frozen Castle, Fairy & Super Hero room. Buddies is best for play and parties.



Visiting



Contact

Buddies Play Centre
4a Woodlands Industrial Estate
Park Road, Killarney, Co. Kerry, V93 CY24
Tel: 064-663 9080
buddieskillarney@gmail.com
www.buddieskillarney.ie



SatNav: Latitude/Longitude
52.0633, -9.4859



Opening Times

Mon to Sat: 10:00–18:00h
Sun: 12:00–18:00h
Opening hours vary during school term, see Facebook



Admission Rates
Under 2yrs €7, Over 2yrs €9



Information
Max age 12 years



Parking
Free car park

Torc Waterfall

Killarney, Co. Kerry

Nestled at the base of Torc Mountain and standing at approximately 20 metres high, the waterfall is beautiful, rugged and at its most wild after a heavy downpour of Irish rain. Climb the 100 or so steps to the left of the waterfall to get some excellent views of the lakes.



Visiting



Contact

Torc Waterfall
Muckross Road
Killarney
Co. Kerry



Location
7km from Killarney on the N71



SatNav: Latitude/Longitude
52.0033, -9.5054



Parking
Car parking available





Mizen Head Signal Station

Goleen, West Cork

Ireland's most South Westerly Point

Mizen Head Signal Station is a Signature Discovery Point on the Wild Atlantic Way.

Visit the Arched Bridge, the 99 Steps, the New Paths to fabulous views of Dunlough Bay and the Sea Arch. See the Mizen Head Signal Station with the Keepers' Quarters and Marconi Room, Mizen Head Visitor Centre with Fastnet Lighthouse Scale Model, Navigational Aids Simulator,

Displays about Geology, Whales, Shipwrecks and more.

You will find souvenirs, toys, books & cards in the Gift Shop and snacks, lunch, teas/coffees and fresh delicious homemade food at the Mizen Café. Mizen Information and e-Centre located on Main Street, Goleen, 10kms from the signal station offers Information, Coffee, Gifts, Wifi, Office Services, Hot Desks and Restrooms.



Visiting



Contact

Mizen Tourism Co-operative Society
Harbour Road, Goleen
West Cork, Co. Cork, P81 NY52
Tel: 028-35000 / 35115
info@mizenhead.ie
www.mizenhead.ie



Location

From Cork take the N71, take the Ballydehob exit. From Killarney, after Bantry take the R591 through Durrus and Goleen



SatNav: Latitude/Longitude
51.4505, -9.8188



Opening Times

Feb 16 to 24 (mid term) £ Mar 01 to 16,
11:00–16:00h daily
Mar 17 to May 31, 10:30–17:00h daily
June, July & Aug 10:00–18:00h daily
Sept to Nov 02, 10:30–17:00h daily
Nov 03 to Feb 29 (w/ends)
11:00–16:00h



Admission Rates

Adult €7.50, Senior/Student €6
Child (U12) €4, (U5) Free, Family (2+4)
€25. Group rates available



Information

Gift Shop, Mizen Cafe, Mizen
Information & e-Centre



Parking

Cars and coaches



Skibbereen Heritage Centre

Skibbereen, West Cork

Skibbereen... The Famine Story



Learn about the Great Famine of the 1840s when over one million Irish people died and up to 1.5 more emigrated.

Skibbereen became infamous as one of the worst affected areas in all of Ireland. The true

enormity of this national tragedy is revealed in microcosm through Skibbereen's Famine stories.

- Rediscover this era through exhibits, dramatisations and interactive stations.
- Take a 'virtual tour' of Famine sites in the town and hear the stories associated with them.
- Follow with a visit to Abbeystrowry Famine burial pits (one of 3 mass Famine graves in Skibbereen) where up to 10,000 victims are buried.

Genealogy Service for the area by appointment.

Gift shop, teas/coffees and a great welcome!



Visiting



Contact

Skibbereen Heritage Centre
Skibbereen, West Cork
Co. Cork, P81 WK06
Tel: 028-40900
info@skibbheritage.com
www.skibbheritage.com



Location

From Cork City: Take the N71 road through Bandon and Clonakilty approximately 80km. From Killarney take the N71 via Kenmare and Bantry approximately 80km



SatNav: Latitude/Longitude
51.5502, -9.2717



Opening Times

Mid March to April 30 & October:
Tues to Sat inclusive 10:00–18:00h
High Season May 01 to Sept 30
Daily except Sunday 10:00–18:00h
Winter opening by appointment only



Admission Rates

Adult €6, Children €3, Family €14
Student / Senior €4.50
Group rates available



Information

Gift Shop, Tea / Coffee, Wheelchair accessible



Parking

Adjacent car park, free parking for cars and coaches





Fastnet Rock Tour

From Baltimore & Schull, West Cork



West Cork Adventure

Fastnet Rock Tour

For generations the majestic and isolated Fastnet Rock (a Great Lighthouse of Ireland) has fired the imaginations of onlookers, both locals and visitors alike. The Fastnet was also known as Ireland's Teardrop as it was the last part of Ireland seen by thousands of Irish emigrants as they sailed away to the New World, most of them never to return again.

The Fastnet Rock Tour is a day trip that brings you first to the Fastnet Exhibition and multi media display in the Cape Clear & Fastnet Rock Heritage Centre on Cape Clear Island. This will allow time to see the Fastnet Rock Memorials on Cape Clear



Island and to view the Rock from the Island itself. The tour later circumnavigates the rock to view it from all sides at close quarters.

Subject to Weather

Please check the website 24-72 hours in advance for weather conditions.

To plan more visits to Great Lighthouses of Ireland see www.greatlighthouses.com



Whales, Dolphins, Porpoises and Basking Sharks

West Cork is renowned for its whale and dolphin sightings and your trip to the Fastnet brings you through some of the best areas for sighting these magnificent creatures.

The skippers will make detours to give you the best possible views when they are in the vicinity.

Visiting



Contact
Fastnet Rock Tour
Ionad Fiontair, Cape Clear Island
Baltimore or Schull, Co. Cork
Tel: 028-39159/087-266 1617
info@fastnettour.com
www.fastnettour.com
www.greatlighthouses.com



Location
Baltimore Pier (Eircode P81 HW89)
Schull Pier (Eircode P81 V221)



SatNav: Latitude/Longitude
Fastnet Tour sails from:
Baltimore: 51.4818, -9.3736
Schull: 51.5247, -9.5443



Sailing Times
Apr to Sept, Tues to Sun
Depart Baltimore or Schull
Full timetable or to book online visit
www.fastnettour.com



Fares
€40 per person. €90 family (2+2)
Check website for more info.



Parking
Public parking available in Baltimore and Schull

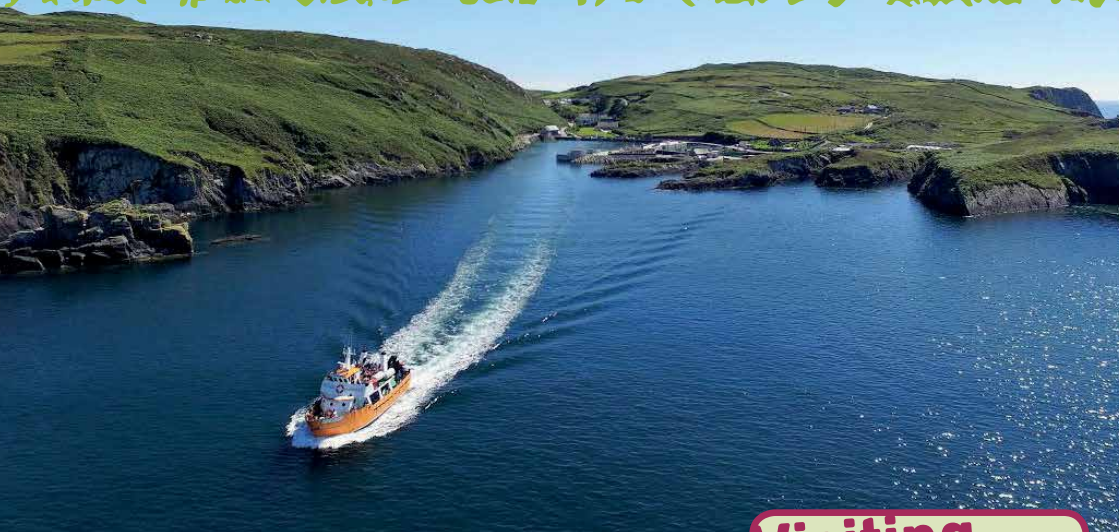




Cape Clear Island Ferry Service Farantóireacht go Cléire

Baltimore/Schull, West Cork

WILD ATLANTIC WAY
SLIAN ATLANTAIGH FHIAIN



Friendly Cruise service to a unique Irish coastal community



The award-winning Cape Clear Island Ferry is a friendly ferry and cruise service to Oileán Chléire (Cape Clear Island), West Cork. Travelling by sea is more than just a journey and there is no effort spared to ensure that your trip is as enjoyable as possible. The friendly guides provide commentary while experienced Skippers constantly scan the seas for whales, dolphins and basking sharks which abound in these waters, if seen, a detour is made to give passengers the best views. Seeing a minke whale is easily



worth an extra 5 minutes!

The Ferries: the Dún Na Óir II and the NEW FAST FERRY-Dún Na Séad II are modern and comfortable with upper viewing/sun decks offering breathtaking views of the spectacular local scenery. Usually alternative ingoing and outgoing routes are offered around Sherkin Island to show to best advantage, the varied and stunning views of the many Islands and coastline of West Cork.

Special rates for groups, coaches and parties including school tours.

Gaeltacht is ea Cléire agus cuirtear fáilte ar leith roimh An Ghaeilge. Tá dhá choláiste samhraidh agus Institiúid Teanga san Oileán agus reachtáltear réimse cúrsaí tríd an bhliain ar fad. Féach www.oilean-chleire.ie

Hikers and Cyclists

Bicycles are carried for only €2 and you can travel onwards to Schull at no extra cost. As ferries are in demand in the Summer you can purchase tickets online at www.capeclearferries.com to guarantee your place.

Visiting



Contact

Cape Clear Island Ferry
Ionad Fiontair
Oileán Chléire, Co. Chorcaí
Tel: 028-39159
Boat: 086-346 5110
info@capeclearferries.com
www.capeclearferries.com



Location

The Dún an Óir II and the Dún Na Séad II sails from:
Baltimore Pier (Eircode P81 HW89)
Schull Pier (Eircode P81 V221)



SatNav: Latitude/Longitude

Baltimore: 51.4818, -9.3736
Schull: 51.5247, -9.5443



Sailing Times

All year round. Check website for more detail,
www.capeclearferries.com



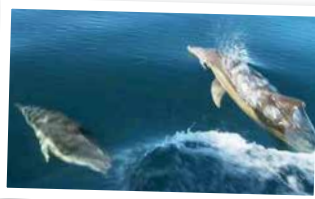
Fares

Adult €18
Family (2 adults & 2 children) €45
Additional Children €5
Book your tickets online at www.capeclearferries.com to ensure your place



Parking

Car park adjacent to the Pier with a number of overflow car parks available during the high season





The Clonakilty Park

Cinema, Golf and Adventure Centre

Clonakilty, Co. Cork



Fun for all the family!

Located on the complex of the Clonakilty Park Hotel. Whatever your skill level the Adventure Centre course is designed to match it. Adrenalin junkies will love the High Ropes Courses. Push yourself to new heights on the climbing tower, with two challenging walls. Step off the 20m platform at the top of the tower for a free fall that uses a power fan to control the descent. Ever tried zipping down a Zipwire? The 100m zipline is suitable for daredevils young and old. Height and weight restrictions apply to the Adventure Centre. If this all seems too much for you how about a blockbuster movie in the 3-screen cinema? This year the park is delighted to add

the Clonakilty Park Adventure Golf to the Complex. Due to open in June 2020 it will provide lots of fun for all the family. Great Family Rates for the Adventure Centre and Adventure Golf. Whatever the weather they've got you covered.



CLONAKILTYPARK
ADVENTUREGOLF

Something for everyone...

The Clonakilty Park Hotel is located beside the Clonakilty Park Cinema, Golf and Adventure Centre and is open all year round. This award-winning family friendly hotel boasts fantastic facilities including an indoor soft play area, creche, leisure facilities, outdoor pirate ship playground and a kids club. There are nightly kids disco in the summer holidays. Twist Bar & Bistro offers tasty food all day and the Coffee Zone provides tasty light bites, coffees and teas and treats.

Visiting



Contact

The Clonakilty Park Cinema, Golf and Adventure Centre
Clogheen Road, Clonakilty
Co.Cork, P85 RD23
Tel: 023-883 4141
info@clonadventurecentre.ie
www.clonadventurecentre.ie



Location

Located on the Clonakilty Park Hotel complex just outside Clonakilty Approx. 35 miles south of Cork City



SatNav: Latitude/Longitude
51.6168, -8.8948



Opening Times

Adventure Centre: July & Aug daily
Sessions at 12:00, 15:00 & 17:00
Open weekends at off peak times,
check website & social media
Cinema: Open year round
See www.theparkcinema.com
Golf: Jul & Aug open daily



Admission Rates

Adventure Centre: Adult/Child €15
Family (2+2) €50
Cinema: Adult/Child €6.50 day time.
Adults €8.50 for evening shows
Golf: Adult €7, Child €5, Family (2+2)
€22, Family (2+3) €25



Information

Ideal for schools, sports groups,
events & birthday parties
Height & weight restrictions apply



Parking

Free coach and car parking





West Cork Model Railway Village

Clonakilty, Co. Cork

At Ireland's only Model Village feel like a giant while exploring 1940's West Cork. Follow the model g-scale locomotives chugging through tunnels and over viaducts. Take a 30 minute audio tour aboard the iconic Road Train through the beautiful town of Clonakilty. Children can enjoy the Remote Control Boats as well as indoor and outdoor play areas. Café and Gift Shop on site.



Visiting

Contact
West Cork Model Railway Village
Inchydoney Road, Clonakilty
Co. Cork, P85 HR26
Tel: 023-883 3224
info@modelvillage.ie
www.modelvillage.ie

SatNav: Latitude/Longitude
51.6200, -8.8823

Opening Times
Open daily year round 11:00–17:00h
Extended opening for July and August
Last admission one hour before closing

Admission Rates
Adult €12, Senior/Student €9
Child (2–5 yrs) €5.50
Child (6yrs+) €7.50
Family (2+2) €39

Parking
Ample free parking for coaches and cars

Ballyhass Aquaparks

Coachford & Mallow, Co. Cork

Exciting, inflatable waterparks!



Slide, Climb, Swing and Swim your way around these unique courses. Perfect for groups, as well as families and individuals. No experience necessary, participants just need to be able to swim. All equipment including wetsuits is provided but please remember to bring swimwear and a towel.

Ballyhass Aquaparks; the perfect water activity for the Irish summer. Inflatable waterparks in two convenient locations in Coachford and Mallow. Think a mix of wipe out and ninja warrior but on water.

There is a host of extra land-based activities at each location to enhance your experience, such as Axe Throwing, Archery, and Team Challenges to name a few.

Prebooking Essential

Visiting

Contact
Ballyhass Coachford
Coolnagearagh
Coachford
Co. Cork, P12 AN29
Tel: 022-27773
info@ballyhasslakes.ie
www.ballyhassaquapark.ie

Location
Coachford: Follow the R618 out of the village for 3km and Ballyhass Aquapark is on the left

SatNav: Latitude/Longitude
Coachford 51.9137, -8.8288
Mallow 52.1741, -8.7985

Opening Times
May to Sept: 10:00–18:00h

Admission Rates
Adult €20, Child (6yrs+) €15

Information
Extra activities available on both sites (anyone over 8 years old)
Bring packed lunches and plenty of drinks

Parking
Carparking available



West Cork

West Cork stretches from Kinsale to the Beara Peninsula and takes in Bandon, Clonakilty, Skibbereen, Macroom, Bantry and Sheeps Head Peninsula. On this section of the Wild Atlantic Way, you will find breathtaking scenery, tranquillity, traditional pubs, world-class restaurants and comfortable accommodation.





Zipit Forest Adventures

Farran Wood, Co. Cork



Exhilarating Treetop High Ropes Adventure

Zipit Farran Wood is located in Farran Forest Park on the southern shore of Inniscarra lake in County Cork. It enjoys panoramic views of the lake and surrounding countryside. A wildlife enclosure holds a small herd of deer and a large pond is home to ducks and geese. The newly developed children's playground offers more entertainment for the little ones.

Zipit Farran Park is a treetop high ropes course with a difference. A great day out for families, groups, singles, or clubs looking for an exhilarating and challenging outdoor activity in a natural forest setting. This acclaimed High Ropes Course has 91 activities and over 800 meters of Ziplines for you to enjoy. Climb high into the treetops,

swinging into cargo nets or try cycling a bike over a narrow treetop bridge before zipping down one of the many ziplines. Qualified Instructors will give you a short Safety Briefing to explain the features of the course and equipment. You have a maximum of four hours, enough time to complete at least three circuits. There are 5 circuits suitable for different heights, ages and abilities and should you need any help or encouragement, instructors are never far away. Only 20 minutes from Cork city and within walking distance of the National Rowing Centre.

Other courses:

Tibradden Wood—Dublin 16
Lough Key Forest Park—Boyle, Co. Roscommon
Telephone 051-858 008

Good to Know

Zipit Farran covers 1.2km of treetop activities. There are over 91 activities between platforms in the trees. Over 800m of ziplines. The longest zipline is 150m. Five circuits ranging from 1–15 metres. Each circuit is customised and designed with graded difficulty levels. As you progress from tree to tree the challenge increases as you continue at your own pace. Zipit Forest Adventures is a member of the European Ropes Course Association.

Visiting



Contact

Zipit Forest Adventures
Farran Forest Park
Aglish, Co. Cork, P31 C427
Tel: 051-858 008
info@zipit.ie
www.zipit.ie



Location

Farran Park is located off the N22 Cork to Macroom Road. Turn right in the Village of Srelane at Dan Sheehan's Pub, signposted for Farran Forest Park and the National Rowing Club. 7km along the L2202



SatNav: Latitude/Longitude

51.8914 -8.7573



Opening Times

Open Feb to Nov
(availability shown online)
Group bookings call 051-858 008
Open 7 days May to Aug
Open School Mid-term breaks, Easter and B/Hols
See website for full opening hours



Admission Rates

Discounted Online Prices
7–8 yrs €15, 9–11 yrs €25
12–14 yrs €30, 15+ yrs €35
Group discounts available
Min. Height Restriction of 1 metre
Min. age 7yrs



Information

Picnic Areas, Walking Trails – Moderate, Kids playground



Parking

Coach and car parking charge €5 (coins only)





Toy Soldier Factory

Macroom, Co. Cork



Battle of Waterloo Exhibit extended another year due to popular demand!

A visit to this jaw dropping Exhibit of the famous Battle of Waterloo is a must. It depicts the historic and monumental battle of Waterloo 1815. Learn how the Irish Commander Duke of Wellington recruited over 30,000 Irish men to the British army and how these courageous men fought off the French troops under Napoleon Bonaparte. The huge Diorama, totalling 26 x 13 feet (8x4 Metres) in size, houses 15,000 hand cast and painted model figures. "Making history fun". **Watch an introduction to the battle on a giant video screen.** All figures are from the Prince August range of products and are available in the shop.

MAKE & PAINT A FIGURE:
Take part in a 60min + workshop suitable for adults and kids!!

- 1: Choose your figure
- 2: Cast it
- 3: Paint it
- 4: Take it home!!

The visitor centre also has a treasure trove of hand painted figures:

- Lord of the Rings Characters
- Fairies
- Mightiest Dragons
- Michael Collins Irish Heroes 1916
- Traditional Toy Soldiers
- Leprechauns
- Historical Chess Sets

All available at Factory Prices!!

WE BRING THE CHILD OUT IN YOU!

Visiting

Macroom

Contact
Toy Soldier Factory
Kilnamartyra Village
Macroom, Co. Cork, P12 FN79
Tel: 026-40342
info@toysoldierfactory.ie
www.toysoldierfactory.ie

Location
Halfway between Cork and Killarney
40min drive from either
Well signposted on N22

SatNav: Latitude/Longitude
51.9001, -9.0831

Opening Times
Mon to Fri: 09:00–17:00h
W/ends € B/Hols: 10:00–17:00h

Admission Rates
Adult €4, Child (U10) Free
Workshops from €5 before 11:30h
10% discount for booking online

Information
Gift shop on-site
Picnic Area, Coffee Dock, Tuck Shop

Parking
Free parking cars, coaches and jaunting cars

Visit Ireland's Only Toy Soldier Factory!

Watch a Toy Soldier being Cast (made)in Real Metal, Hand Painted, Labelled and Packed right before your eyes.
NEW: "How to find us page" see website for details.





Blarney Castle and Gardens

Blarney, Cork



Where the Blarney Began

Nestled in the charming village of Blarney is one of Cork's greatest treasures. Built nearly 600 years ago, Blarney Castle is known the world over for the famous Blarney Stone that has been a must see attraction for any visitor to Ireland over the past 200 years! In 2006, the Discovery Channel listed kissing the Blarney Stone amongst its 99 things to do before you die!

The Blarney Stone is believed to be one half of the stone of Scone, which was given by Robert the Bruce to

Cormac McCarthy in 1314 for his support in the Battle of Bannockburn. World statesmen, literary giants and legends of the silver screen have joined millions of pilgrims who climb the towers steps to kiss the stone every year in the hope to receive the 'Gift of Eloquence'.

However, in addition to the most famous stone in the world, the Blarney Castle estate also offers visitors the chance to stroll one of the country's most spectacular gardens, enjoy a picnic by the lake or explore

Blarney Castle Gardens

The Estate gardens include extensive gardens and an Arboretum surrounding the Castle and House which extend around the Lake with acres of parkland filled with rare and unusual trees including many maples, southern beech and giant western red cedars. In Spring the grounds are carpeted with bulbs and the 'Belgian beds,' full of hybrid azaleas are in full flower. There are formal gardens around the house with manicured lawns, rose-beds, mixed shrub beds, which contain many rhododendrons. The House overlooks green pastures, where horses and cattle graze, to Blarney Lake. You may take a pleasant stroll around the lake and woodland walks. The fern garden has the atmosphere of a tropical jungle. The ruin of an old limekiln and a Victorian 'Ice House', are also in the grounds with a herbaceous border and numerous rare trees.

Visiting



Contact

Blarney Castle & Gardens
Blarney, Cork, T23 Y598
Tel: 021-438 5252
info@blarneycastle.ie
www.blarneycastle.ie



Location

In Blarney town centre. Blarney is easily approached from the Cork to Limerick Road



SatNav: Latitude/Longitude
51.9292, -8.5686



Opening Times

Monday to Saturday
Mar, Apr & Oct 09:00–18:00h
May & Sept 09:00–18:30h
Jun, Jul & Aug 09:00–19:00h
Nov to Feb 09:00–17:00h
Sunday & B/Hols
Mar to Oct 09:00–18:00h
Nov to Feb 09:00–17:00h
Last admission one hour before closing. Please note times are subject to change due to bad weather/poor light



Admission Rates

Adult €18 Child (8–16) €8
Under 8 Free, Family €45
Senior/Student €14



Information

Two souvenir shops and refreshments available



Parking

Car and coach parking beside entrance. Also taxi rank



the Rock Close—a mystical place where majestic yew and oak trees grow around an ancient druidic settlement. Here, visitors will find an ancient Dolmen, a Druids Circle, a Witches Kitchen, Fairy Glade, Wishing Steps, Waterfall and much more. Spend a day exploring this enchanted and magical wonderland and get a real sense of Irish history!





Old Cork Waterworks Experience

Lee Road, Cork City

Built to serve an empire and constructed during a time of rebellion, worldwide trade and emigration, Old Cork Waterworks played a key role in the prosperity of Cork and offers fascinating insights into the city's industrial heritage. Told through the eyes of former employees, hear their stories through interactive displays, guided tours and stunning Victorian Architecture.

Audio guides available in English, French, German, Italian and Spanish.



Visiting



Contact
Old Cork Waterworks Experience
Lee Road, Cork City, T23 N828
Tel: 021-494 1500
lifetimelab@corkcity.ie
www.lifetimelab.ie



SatNav: Latitude/Longitude
51.8951, -8.5093



Opening Times
Apr to Aug: Mon to Fri 09:00–17:00h
Sat/Sun & B/Hols 10:00–17:00h
Sept to Mar: Mon to Fri 09:00–17:00h
Closed Sat/Sun & B/Hols



Admission Rates
Adult €5, Senior/Student €4, Child €3
Family (2A+2C) €15



Information
Wheelchair accessible, Coffee Dock, Picnic Area and Children's Playground



Parking
On-site car park

Camden Fort Meagher

Crosshaven, Co. Cork



Internationally recognised as being one of the finest examples of a classic coastal artillery fort in the world. Interactive exhibitions and extensively restored areas of the fort offer an extraordinary glimpse of the fort's strong British and Irish military history. For a family day out, the fort offers exhibitions, re-enactments and panoramic views of Cork Harbour. Please check website for upcoming events.



Visiting



Contact
Camden Fort Meagher
Camden, Crosshaven
Co. Cork, P43 WY82
Tel: 085-850 1483
bookings@camdenfortmeagher.ie
www.camdenfortmeagher.ie



SatNav: Latitude/Longitude
51.8089, -8.2789



Opening Times
May Open Sundays only
Jun to Sept 12:00–17:00h
Sat, Sun & Bank Holidays
Last admission 16:15h



Admission Rates
Adult €6, Child €4
Family (2+2) €15



Information
Free Parking. 220 / 220x bus from Cork

Titanic Experience Cobh

Cobh, Co. Cork

Titanic Experience is located in the original White Star Line Ticket office in the heart of historic Cobh Town. Each visitor gets the opportunity to travel as one of the 123 passengers who boarded the ill-fated liner from here in 1912. Follow in their footsteps and learn more about the local connection to the legendary Titanic.



Visiting



Contact
Titanic Experience Cobh
20 Casement Square, Cobh
Co. Cork, P24 DW63
Tel: 021-481 4412
info@titanicexperiencecobh.ie
www.titanicexperiencecobh.ie



SatNav: Latitude/Longitude
51.8499, -8.2949



Opening Times
Open year round
Apr to Sep 09:00–18:00h
Oct to Mar 10:00–17:30h



Admission Rates
Adult €10, Senior/Student €8.50
Child (4–16yrs) €7, Child (U4) Free
Family (2+2) €27



Parking
On-street parking

Cobh, The Queenstown Story

Cobh, Co. Cork



History, Emigration, Convict Ships!



Cobh Heritage Centre features a dramatic exhibition of the origins, history & legacy of Cobh, a unique Irish port town. It tells the story

of emigration, coffin ships & convict ships and shows the special connection between Cobh & the ill-fated Titanic & Lusitania.

The Queenstown Story retraces the steps of the 2.5 million Irish people who emigrated from Ireland via Cobh on coffin ships, early streamers and on great ocean liners.

Discover Cobh's special connection with the ill-fated Titanic which sank on her maiden voyage - Cobh was her last port of call. A total of 123 passengers embarked at Cobh, then known as Queenstown. The exhibition relates many of the individual stories and artefacts from those on board.

The centre also has a genealogical service for those interested in tracing their Irish Heritage.

Visiting

Contact

Cobh Heritage Centre
Deepwater Quay, Cobh
Co. Cork, P24 CY67
Tel: 021-481 3591
info@cobhheritage.com
www.cobhheritage.com

Location

Cobh, Railway Station, Co. Cork

SatNav: Latitude/Longitude
51.8490, -8.2986

Opening Times

Open year round
Apr to Oct 31
Mon to Sat 09:30-18:00h
Sun & B/Hols 11:00-18:00h
Nov to Mar 31
Mon to Sat 09:30-17:00h
Sun & B/Hols 11:00-17:00h
Last entry to exhibition, one hour before closing
Closed Dec 24-27 & Dec 31-Jan 08

Admission Rates

Adult €11, Child (6-14yrs) €6
Child (U5) Free, Family (2+2) €28
Student/Senior/Group €9

Information

Café/Restaurant & Gift Shop on-site

Parking

Car parking outside (fee required)
Free car parking a 10 minute walk
Coach parking nearby



Spike Island

Cobh, Co. Cork

Former Fortress and once the world's largest prison

Discover Captains and Convicts and Sinners and Saints at Ireland's prison island, voted Europe's Leading tourist attraction of 2017! Spike Island Cork has over 1300 years of rich Irish history having once been home to the remote 7th century monastery in the Celtic sea, a fortress built to defend an empire, an island prison that held a nation and centuries of Irish social life. The 1850s prison was the largest in the world and there has never been a larger prison in Ireland or Britain before or since, while the island fortress was considered so important Winston Churchill called it 'the



sentinel tower of the defences of western Europe'.

Today the island can be visited by a short and scenic ferry ride from beautiful Cobh, just 25 minutes from Cork city. On the island visitors can take the guided tour, use an audioguide or self guide the island's 104 acres using the FREE map and app.

Visiting

Contact

Spike Island
Carrig House, Cobh
Co. Cork, P24 E446
Tel: 021-237 3455
admin@spikeislandcork.ie
www.spikeislandcork.ie

Location

Follow signs for N25, Cobh
Boats depart Kennedy pier Cobh
20 mins from Cork city & airport

SatNav: Latitude/Longitude
51.8498, -8.2943

Opening Times

See website for sailing times. Open
7 days Apr to Oct. Weekends and
school hols Feb/Mar & Nov. Pre-
booked groups can visit 363 days

Admission Rates

Adult €20, Senior/Student €17
Child €11, Family (2+2) €49, includes
return ferry, guided tour & entry to all
attractions. From 2 hours to all day,
visit 3.5hrs approx. Seasonal offers,
check website for offers/pricing

Information

Café and Gift Shop on site, activities
for kids, suitable for all ages, requires
some walking

Parking

Free parking in Cobh cathedral and
Five Foot Way Car Park





Fota Wildlife Park

Fota Island, Co. Cork

Ireland's Wildest Attraction

Fota Wildlife Park is set on 100 acres on the scenic Fota Island in the heart of Cork Harbour. It is a unique place where you can come face to face with free roaming animals and birds from all parts of the world. So if it's a Kangaroo that hops in front of you, or a Ring-tailed lemur, which jumps down from a tree, each visit is sure to bring its own fantastic memories.

Fota Wildlife Park now features the Asian Sanctuary—with Asian lions, Sumatran tigers and Indian rhinos. The cheetah run, tropical house and giraffe crossing are also must-sees.



The development of the Asian Sanctuary over the past five years has enhanced the Park as an iconic international visitor attraction as well as serving the core values of conservation, education, and research.

Facilities include cafés, several play areas, picnic areas and a gift shop. Accessible by train and car.

Visiting



Contact

Fota Wildlife Park
Fota Island, Carrigtwohill
Co. Cork, T45 CD93
Tel: 021-481 2678
info@fotawildlife.ie
www.fotawildlife.ie



Location

Situated 20 mins drive from Cork city off the N25, or take the Cork-Cobh train to Fota Wildlife Park station



SatNav: Latitude/Longitude

51.8903, -8.3057



Opening Times

Mid-Mar to Oct
Mon to Sun 10:00–18:00h
Nov to mid-Mar
Mon to Sun 10:00–16:30h
Last admission an hour and a half before closing
Times subject to change



Admission Rates

Adult €16.90, Child €11.50
Student/Senior €12.50
Family (2+2) €49.50, (2+3) €59,
(2+4) €66



Information

Gift shop and restaurant facilities



Parking

Ample parking €3/daily visit



Fota House

Fota Island, Co. Cork

A regency style great country house...



Fota House is Ireland's finest example of Regency period architecture with superb neoclassical interiors. Discover the grand decor of the principle rooms and charming nursery or the service wing with the beautifully preserved kitchens, where you can experience what life was like for the cooks,

butlers, footmen and maids who supported the lavish lifestyle of the gentry. Enjoy the tranquil beauty of Fota's gardens and stroll in the historic 'pleasure grounds' or the award-winning

Victorian Working Garden.

Before you leave visit the Bakestone at Fota House café for delicious food and drink, served with a smile in the warm and wonderful Billiards Room and Gallery.

Fota House is an Irish Heritage Trust Property.

Visiting



Contact

Fota House
Fota Island, Carrigtwohill
Co. Cork, T45 Y642
Tel: 021-481 5543
info@fotahouse.com
www.fotahouse.com



Location

From Cork City take N25 East, 7km to Junction (signposted Cobh). Follow R624 for 2.5km. Fota House is on the right



SatNav: Latitude/Longitude

51.8898, -8.3037



Opening Times

Mar to Sept, Mon to Sun: 10:00–17:00h including Bank Holidays



Admission Rates

Adult €8, Child €3, Family (2+2) €19
Concessions/Groups €6
Victorian Working Garden Tour:
Adult €5, Child €2, Family (2+2) €14,
Concessions €4
Combo Tour (House & Victorian Working Garden): Adult €11, Child €4,
Family (2+2) €29, Concessions €8



Information

Tree Trails for children (age 3–6 & 7–10). Arboretum map and trail (for adults) On-site Café



Parking

All day parking available at €3





Jameson Distillery Midleton

Midleton, Co. Cork



A World of Whiskey Awaits at Jameson Distillery Midleton

Today, every drop of Jameson is produced in Midleton. It's the place of whiskey-making dreams, where a true Irish welcome awaits. You are invited to take one of the fully guided tours around amazing, heritage grounds. It's here you'll come face-to-face with the largest pot still in the world, see micro-distillery in action, experience the live maturation warehouse and taste Jameson whiskeys along the way. Fully-guided experiences include the flagship Jameson Experience Tour, which brings you through the old distillery buildings, a Premium Whiskey Tasting, a Behind the Scenes tour where you can discover hidden gems behind closed doors, a Cask Opening Experience where you draw and taste whiskey straight from a cask and the

Distiller's Apprentice Tour where you learn about the whiskey process from grain to glass finishing with a visit to the working distillery. With five fully immersive experiences on offer, there is something for everyone who wishes to learn more about Ireland's world-famous spirit.

With so many things to do, taste and learn there really is no time like the present to explore the past.



The Malthouse Restaurant

Also available in Jameson Distillery Midleton is The Malthouse Restaurant. All ingredients (just like the whiskey) come from down the road. Included in the menu are traditional hot dishes, made with a modern twist, and served daily from 12–3pm. If you're in search of just a coffee and a snack, you're warmly welcome to call in anytime between 10–4pm.

Visiting



Contact

Jameson Distillery Midleton
Distillery Walk, Midleton
Co. Cork, P25 XD57
Tel: 021-461 3594
To book, please visit:
Jamesonwhiskey.com
Midleton@jamesonwhiskey.com



Location

Distillery Walk, Midleton, Co. Cork



SatNav: Latitude/Longitude
51.9136, -8.1672



Opening Times

Open Daily 10:00h–18:00h
Mar–Oct: Regular Tours daily
Last tour 16:45h
Nov–Feb, 4 Flagship Tours daily
11:00h, 13:00h, 14:30h & 16:15h



Admission Rates

Adult €23, Student/Senior/Group
€19, Child €11, Family (2+3) €55
Premium Whiskey Tasting €30
Behind the Scenes Tour €60
Please book via website
www.jamesonwhiskey.com



Information

Return Bus Service from Cork City
Apr to Oct from St. Patrick's Quay
Tickets available online and on
the bus



Parking

Free Coach and Car parking





Ballycotton Lighthouse

Ballycotton Island, Co. Cork

A Great Lighthouse of Ireland



Built in the 1840s, Ballycotton Lighthouse sits atop the unspoilt Ballycotton Island across the bay from the foodie haven of East Cork. A black lighthouse (one of only two in Ireland) is only accessible by boat. This makes a trip to Ballycotton Lighthouse something very special.

Look forward to an exhilarating journey from the harbour to the island. Walk the original light-keepers path to the island's summit. You may meet some of the resident goats.

See the unspoilt flora and fauna. And, of course, explore the lighthouse and enjoy stunning views from the bright red lantern balcony.

To plan more visits to Great Lighthouses of Ireland see www.greatlighthouses.com

Visiting



Contact

Ballycotton Sea Adventures
Ballycotton Lighthouse
Ballycotton Island
Co. Cork
Tel: 087-396 3998
www.greatlighthouses.com



Location

Located 45 minutes east of Cork City. Ballycotton Sea Adventures
Eircode: P25 FY94



SatNav: Latitude/Longitude
51.8262, -7.9850



Opening Times

Open all year. Subject to weather



Admission Rates

Boat & Tour:

Adult €20, Concession €18
Child (3-12yrs) €12, Family (2+2) €55



Information

Boat & Tour:

Ballycotton Sea Adventures
087-396 3998
www.ballycottonseadventures.com



Parking

Limited parking on site



Blue Flag Beaches

Kerry & Cork

Enjoy a day at the beach



With such an extensive coastline along the two counties of Kerry & Cork you would expect to find quality beaches.. and you won't be disappointed. With many beaches meeting the Blue Flag standard you are certain to be never far from a great day out at the beach.

The Blue Flag is an international award for beach excellence. It is presented to beaches which have excellent water quality, which provide a range of services and visitor facilities, and which fulfil

other specified criteria including environmental management, litter control and education.

If you enjoy the great outdoors, there's no better place for a holiday. There's so much to see and do!

Visiting



Contact

For up-to-date listings of current Blue Flag Beaches check on-line
www.blueflagireland.org



SatNav: Latitude/Longitude
Kerry

Ballybun North: 52.5116, -9.6786
Ballybun South: 52.5056, -9.6815
Ballyheigue: 52.3830, -9.8342
Banna: 52.3508, -9.8358
Fenit: 52.2754, -9.8662
Magherabeg: 52.2786, 10.0234
Ventry: 52.1321, -10.3642
Inch: 52.1424, -9.9853
Rossbeigh: 52.0582, -9.9752
Kells: 52.0247, -10.1047
White Strand Caherciveen: 51.9429, -10.2741
Ballinskelligs: 51.8216, -10.2726
Derrynane: 51.7602, -10.1277

Cork

Barleycove: 51.4618, -9.7618
Tragumna: 51.5002, -9.2667
Owenahinch: 51.5651, -8.9975
Inchydoney: 51.5969, -8.8648
Garretstown: 51.6434, -8.5799
Garrylucas: 51.6400, -8.5675
Redbarn Beach: 51.9243, -7.873





Youghal Clock Gate Tower

Youghal, Co. Cork

 IRELAND'S
ANCIENT EAST®



People, Place, Stories...

Within the medieval walls of the jewel, coastal town of Youghal, lies the fascinating Youghal Gate Clock Tower. As the most visible landmark in the centre of Youghal Main Street, the tower has been inextricably linked with the surrounding landscape and community across more than 700 years of history.

Led by an expert costumed guide, this iconic building's story of love, generosity and friendship as well as pain, tragedy and rebellion are literally brought to life through a sensory experience that includes smelling the spices in the Merchants Quarters, touching silks, testing the bed and bathroom facilities in the gaol cell, reading the accounts

of the gaol and winding the enormous clock.

Ending on an incredibly moving note, insights into the McGrath family are shared through John McGrath who explains what daily life was like—with all of its highs and lows—for his parents, brother and sisters who were the last residents of the tower.

As an iconic building that simply keeps giving and giving, from a 5th floor platform, there is then an opportunity to marvel at the magnificent 360 degree views over Youghal Bay, Waterford, Youghal Lighthouse and Youghal town itself.



St. Mary's Collegiate Church

While in Youghal, pay a 'must see' visit to the historic 'Raleigh Quarter'. Explore the medieval St. Mary's Collegiate Church (a national monument) and stunningly restored 13th century Town Walls. The history here is tangible. The children will love the on-site pop-up museum together with the exciting Walter Raleigh Treasure Trail. The Graveyard Trail with interesting information points includes access to the 'Town Wall Walk' with stunning views across the town and the bay.

Visiting

Contact

Youghal Clock Gate Tower
Main Street, Youghal
Co. Cork, P36 K662
Tel: 024-20769
tours@youghalclockgate.ie
www.youghalclockgatetower.ie

Location

Town centre, Youghal, Co. Cork
40 mins from Cork City off N25

SatNav: Latitude/Longitude
51.9528, -7.84665

Opening Times

Mar to May, Thurs–Sun & B/Hols
Jun to Sep, Open 7 days a week
Oct & Nov, Thurs–Sat & B/Hols
Dec to Feb, Prior booking required
Tours on the hour 11:00–16:00h

Admission Rates

Adult €9.50, Child €5 (4–18 yrs)
Family €24 (2A + 2C)
Student/Senior: €7.50 (with valid ID)
Group rates available

Information

Town centre location with shops,
bars, restaurants

Parking

Nearest car park (3 mins walk) is at
Nealon's Quay (free)





Perks Family Entertainment Centre & Indoor Funfair

Youghal, Co. Cork

Indoor Entertainment for all the family



Enjoy a great family day out with entertainment for visitors of all ages. Bowling, Battlefront Lazer Tag, Bungee Trampoline, Carousel, Ladybird Ride, Bumper Boats and the video games arcade with all the modern video games, snooker

and pool. The award-winning Blackbeards Adventure Playcentre goes down a treat with the kids with 3 decks of slides, swings and ball pools. After a long day of fun, relax and unwind in the on-site Fastfood diner and Ice-Cream Parlour, which serve up all your favourite treats.

The **LIBERTY CASINO** (Strictly over 18's) in its own exclusive setting offering state of the art Poker Machines, Slot Machines, Roulette and Live Gaming. Private Tea/Coffee lounge with large screen TV.

Visiting



Contact

Perks Entertainment Centre
Seafield, Youghal
Co. Cork, P36 XC92
Tel: 024-92438
perksfec@gmail.com
www.perksfunfair.com



Location

Youghal, East Cork, a short drive from Cork City. Approx. 35 mins



SatNav: Latitude/Longitude
51.9407, -7.8581



Opening Times

Open daily during the Summer Season. See website for Winter Season opening times



Admission Rates

FREE admission. Pay as you go for games, rides, and activities



Information

Fast Food Diner
Special Group Rates Available
Birthday Party Award Winners
Wheelchair friendly



Parking

Spacious free parking



Youghal

Youghal, Co. Cork

Ireland's Finest Coastal Resort

Youghal a Seaside Resort Town is the perfect family coastal holiday location. There's lots for the kids to do with entertainment & leisure centres, dolphin watching or take a cruise along the stunning Blackwater River. Offering a range of activities for the watersports enthusiasts from deep sea fishing, whale watching and wreck-diving. There are also lots of festivals & events taking place during the year, check out the website for details. As a historic walled seaport town on the coastline of East Cork, it has many historic buildings and monuments

within its ancient town walls. It is one of the few towns in Ireland where the medieval town walls still survive.



Visiting



Contact

Youghal Tourist Office
Market Square, Youghal
Co. Cork, P36 VY44
Tel: 024-20170
www.youghal.ie



Location

Just 35 minutes from Cork City and 50 minutes from Waterford City on the N25



SatNav: Latitude/Longitude
51.9531, -7.8507



Information

A wide variety of Restaurants & Shops for every budget to choose from. A great coastal location famous for seafood. You will also find plenty of old style traditional shopping mixed with modern high street stores, with friendly and helpful staff to assist you



Parking

Paid Parking available on-street
Free parking in 4 car parks



Waterford Suir Valley Railway

Kilmeadan, Co. Waterford



All Aboard to Experience the Magic of Rail!



Board the train at Kilmeadan Station, hear the whistle blow and take off on an exciting journey through the countryside, taking in panoramic views of the River Suir, get a glimpse in to Mount Congreve Gardens, make a wish as you pass through the Fairy Wood and continue on to Carriganore beside Waterford Greenway. Travelling at 15km per hour, the

journey lasts 40 minutes. Saturday trips last 10 minutes longer. Come prepared with a jacket if you want to sit in the open carriages. Enclosed seating also available. This is a fun experience for all ages and all facilities are wheelchair accessible. Refreshments are available in the

Whistle Stop Café. Special events in the year include Choo Choo Fun Days, Nature Express, the Spooky Express at Halloween and Santa Express at Christmas. Check the website for timetables and further information.



Visiting



Contact

Waterford Suir Valley Railway
Kilmeadan Station, Kilmeadan
Co. Waterford, X91 DH93
Tel: 051-384 058
info@wsr railway.ie
www.wsr railway.ie



Location

Located 10km from Waterford City
On N25 towards Cork take Carrick
Road (R680) off Carrick Road
Roundabout. From Cork take 1st
exit off Roundabout on to R680
Kilmeadan Station is on the left

SatNav: Latitude/Longitude
52.2461, -7.2475



Opening Times

April & Sept:
Mon to Sat 11:00–15:00h
Sun 12:00–16:00h
May 01 to Aug 31:
Mon to Sat 11:00–16:00h
Sun 12:00–17:00h



Admission Rates

Adult €10, Child €5
Senior/Student €9
Family (2+1) €23, €3 per extra child
Discounts for groups 20+



Information

Coffee shop and souvenirs



Parking

Car and coach parking



Hook Lighthouse

Hook Peninsula, Co. Wexford



The oldest original operating lighthouse in the world

Hook Lighthouse, one of the most popular visitor attractions in county Wexford. Loved by families year round the lighthouse has many accolades, chief amongst them; it is the oldest original operating lighthouse in the world... yes, the world!

The 800-year-old lighthouse offers a fascinating tour plus a series of festivals and events all year around.

Climb the 115 well-worn steps of the tower and meet the life-size hologram of St Dubhán, a 5th century monk. Meet the Knight William Marshal, dubbed

“the greatest knight that ever lived” plus hear tales of life as a lighthouse keeper. Enjoy the sea breeze on your face as you gaze at the miles of stunning coastline.

Guided tours are on offer 7 days a week. For updates follow @HookLighthouse social media.



Visiting



Contact

Hook Lighthouse
Fethard-on-Sea, Hook Peninsula
Co. Wexford, Y34 YC60
Tel: 051-397 055 / 397 054
info@hookheritage.ie
www.hookheritage.ie



Location

On Hook Peninsula, 50km from
Wexford, 38km from New Ross,
29km from Waterford



SatNav: Latitude/Longitude
52.1247, -6.9289

Opening Times

Open daily 09:30–17:00h. Jul & Aug
late opening, last tour at 19:00h
Guided tours every 30 mins last up
to 1 hour. Last admission 30 mins
before closing



Admission Rates

Adult €10, Senior/Student €9
Family (2+2 aged 5–18) €28
Family (2+3 aged 5–18) €30. US Free
SUNRISE & SUNSET TOUR €45pp



Information

Gift Shop, Café, Bakery, Art Exhibits,
Workshops, Classes, Maritime
Displays. Picnic & Toilet facilities
Free WiFi



Parking

Free car and coach parking





Criostal na Rinne

Irish Crystal Studio & Craft Shop

An Rinn, Dungarvan, Co. Waterford



IRELAND'S
ANCIENT EAST®

Experience behind-the-scenes access with master craftsman Eamonn Terry, creating hand cut crystal in the Waterford Gaeltacht. Marvel at the skill of the glasscutter during a free demonstration in the workshop. Enjoy fascinating historic stories of local glassmaking from the 16th century to the present day. The designs are stories made physical. More than just useful objects, they create meaningful connection with Ireland's rich culture, history, nature and language.



Visiting



Contact

Criostal na Rinne
Baile na nGall Beag, An Rinn
Dungarvan, Co. Waterford, X35 NH28
Tel: 058-46174
info@criostal.com
www.criostal.com



SatNav: Latitude/Longitude

52.0480, -7.5683



Opening Times

Open Mon to Fri 09:30-17:30h
Sat 10:00-17:00h, Sun 12:00-17:00h
Oct to Feb weekends by appointment



Admission Rates

Free



Information

Free WiFi, Tax-free shopping
Worldwide shipping



Parking

Free on-site parking

Munster Vales

Limerick, Cork, Tipperary and Waterford

Munster Vales is a holiday experience and exhilarating adventure that blends history and heritage seamlessly with modern Irish life. Munster Vales crosses the magnificent counties of Limerick, Cork, Tipperary & Waterford taking in five mountain ranges, lush valleys, surging rivers, cascading waterfalls, rugged coastline—the origin of Ireland's great legends and folklore. Bike through deep cut gorges, breathe the pure air and immerse mind and body in the natural, unspoiled beauty of our lands.



Visiting



Contact

Munster Vales
Tel: 076-106 5237
info@munstervales.com
www.munstervales.com



Information

Incorporating the Comeragh, Knockmealdown, Galtee, Ballyhoura and Nagles mountain ranges in the counties of Limerick, Cork, Tipperary and Waterford

Activities include; hill-walking, cycling, horse-riding, castle & medieval tours, heritage sites, kayaking, wake boarding, zip-lining, mountain biking and clay pigeon shooting

Follow Munster Vales on:
Facebook @MunsterVales
Twitter @MunsterVales
Instagram @MunsterValesIreland
#munstervales

Stonehall Wildlife Park

Kilcormac, Co. Limerick

Stonehall hosts a wide variety of rare & domestic animals, from Llamas, Alpacas, Ostriches, Emus, Rheas and a large variety of Parrots & Birds of Prey.

Enjoy the nature trail walk.

Caters for all weather conditions. Visit the indoor pets corner, bring your picnic and enjoy the indoor play area where there are a variety of go-karts and bouncy castles for the children.



Visiting



Contact

Stonehall Wildlife Park
Curraghchase, Kilcormac
Co. Limerick, V94 D7E8
Tel: 061-393 940
info@stonehallvisitorfarm.ie
www.stonehallwildlifepark.ie



SatNav: Latitude/Longitude

52.6080, -8.8680



Opening Times

April, May, June, Sept, Oct
Sat & Sun 11:00-18:00h
July & Aug. Open 7 days a week
Mon to Sat 11:00-18:00h
Sun 11:00-18:00h
Nov to Mar closed
Open Dec for Santa's Grotto



Admission Rates

Adult €9, Child €9, Family rate available
Separate rate for Santa's Grotto



Parking

Parking facilities for coaches & cars

SPECIAL Discoveries

in the South

Great walking trails to explore Kerry and Cork

Selection of easy and moderate walking trails suitable for all ages



Tarbert – John F Leslie Woodland Walk

Tarbert, Co. Kerry. V31 X883

Sat Nav 52.5737, -9.3763

Easy 6.5km trail through woods overlooking Tabert Bay. Start and finish at Tarbert Bridewell Visitor Centre. Parking available.

www.irishtrails.ie



Torc Waterfall Loop & Muckross Lake Loop

Muckross House, Killarney, Co. Kerry V93 CK73

Sat Nav 52.0183, -9.5010

Choice of two moderate walks – 4.5km Torc Waterfall Loop and 15km Muckross Lake Loop. Start and finish at Muckross House. On-site parking available.

www.discoverireland.ie



Claragh Loop

Millstreet, Co. Cork. P51 PT91

Sat Nav 52.0595, -9.0652

Moderate 10km walk starting at St Patrick's Church in Millstreet. Optional detour to summit of Claragh Mountain.

www.irishtrails.ie



Clonakilty Inchydoney Island Rd. Retreat Walk

Clonakilty, Co. Cork.

Sat Nav 51.6220, -8.8847

Start and finish this 3km easy route at the Waterfront Buildings and follow the road to Inchydoney Island. Stunning views of Clonakilty Bay when you pass the Model Railway Village.

www.irishtrails.ie



Kilbrittain Castle Walk

Kilbrittain, Co. Cork.


Sat Nav 51.6738, -8.6852

Start and finish at the Village Park. Moderate 3.7km waymarked walk offering fantastic views of the castle, the woods and Coolmain Bay.

www.irishtrails.ie



A-Z Index

Ref	Attraction	See page...
6	Aqua Dome	10
5	Ardfert Cathedral	9
44	Ballycotton Lighthouse	33
32	Ballyhass Aquaparks	25
35	Blarney Castle and Gardens	28
	Blue Flag Beaches Kerry & Cork	33
9	Bowling Buddies	11
24	Buddies Play Centre	20
18	Caherdaniel	15
37	Camden Fort Meagher	29
29	Cape Clear Island Ferry Service	23
11	Castlegregory	11
30	The Clonakilty Park Cinema, Golf and Adventure Centre	24
39	Cobh, The Queenstown Story	30
4	Crag Cave	9
50	Criostal na Rinne	37
17	Daniel O'Connell Memorial Church	15
19	Derrynane House	16
12	Dingle Peninsula	12
28	Fastnet Rock Tour	22
42	Fota House	31
41	Fota Wildlife Park	31
1	Foynes Flying Boat & Maritime Museum	7
13	Gallarus Oratory	12
49	Hook Lighthouse	36
43	Jameson Distillery Midleton	32
21	Kenmare	18
23	Killarney National Park	20

Ref	Attraction	See page...
3	Listowel Castle	8
26	Mizen Head Signal Station	21
22	Muckcross House	19
51	Munster Vales	37
36	Old Cork Waterworks Experience	29
16	Paddle & Sea	14
46	Perks Family Entertainment Centre	35
20	Seafari	17
2	Shannon Ferry	8
27	Skibbereen Heritage Centre	21
	Special Discoveries—Great Walking Trails	38
40	Spike Island	30
52	Stonehall Wildlife Park	37
38	Titanic Experience Cobh	29
25	Torc Waterfall	20
34	Toy Soldier Factory	27
8	Tralee	10
7	Tralee Bay Wetlands Eco & Activity Park	10
10	Tralee Town Park	11
15	Valentia Island	13
14	Valentia Island Lighthouse	13
48	Waterford Suir Valley Railway	36
31	West Cork Model Railway Village	25
47	Youghal	35
45	Youghal Clock Gate Tower	34
33	Zipit Forest Adventures	26
	Ireland's South Map of Attractions	4/5

Claddagh
Jewellers
MAKERS OF THE

Authentic Claddagh Ring™

SHOP
ONLINE



CLICK &
COLLECT



VISIT OUR STORES

25 MAINGUARD ST. GALWAY ☎ 091 562 310 2 GRAFTON ST. DUBLIN 2 ☎ 01 607 4018

📘 FB.COM/CLADDAGHJEWELLERS 📧 SHOP@THECLADDAGH.COM



WWW.THECLADDAGH.COM



LEGEND ^{OF} _{the}
CLADDAGH RING™

VISITOR CENTRE GALWAY



GALWAY'S NEW AND EXCITING
CLADDAGH RING VISITOR CENTRE AND WORKSHOP

Learn about the origins of Galway's iconic Claddagh ring which dates back over 300 years.

Come and see where the Authentic Claddagh Ring™ is made.

26 SHOP STREET, GALWAY.

🌐 WWW.CLADDAGHLEGEND.COM 📘 FB.COM/CLADDAGHLEGEND