

The BEST Visitor Attractions

GLANCE

Your Daily Adventure

2020/21

FREE
Visitor
Guide



Ireland's
South East

WIN
a Great
Lighthouses
of Ireland
holiday



DISCOVER IRELAND.IE

YourDailyAdventure.com

WIN

an Amazing Holiday Break at a



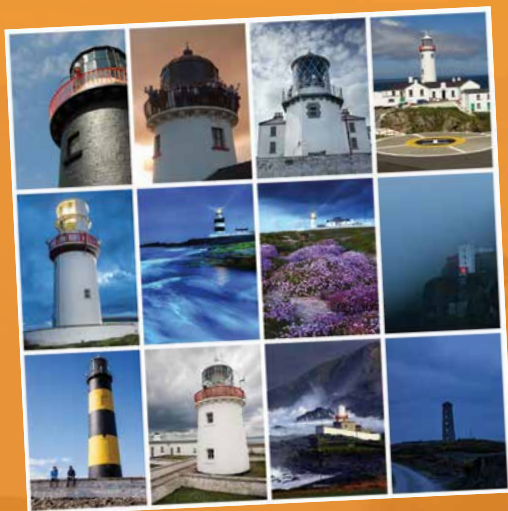
Take our **2-minute** online feedback survey, and you could win this fantastic prize.

This Daily Adventure guide provides you with lots of great ideas on things to do, see and enjoy during your Ireland holiday. We encourage and welcome reader feedback and, therefore, if you take our 2-minute **online survey** you will have a chance of winning a wonderful Lighthouse Holiday Break for up to 5 people sharing at a choice of locations around Ireland.

Take the Survey and Win

Our feedback survey will take you no more than 2 minutes to complete, and you can do so online via www.YourDailyAdventure.com/enter, OR you can scan the QR code above.

You must complete the online survey no later than Friday, October 9, 2020.



The Prize

A Stay at an Amazing Irish Lighthouse

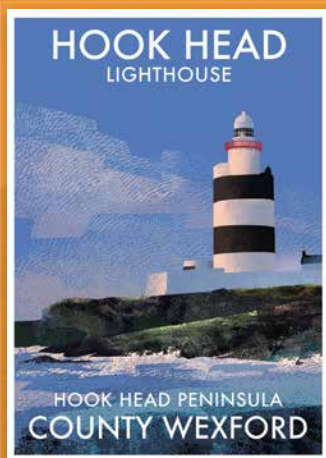
Great Lighthouses of Ireland features 14 amazing lighthouses perched high in dramatic locations around Ireland's stunning coastline. They are wonderful to visit, and visitors can also stay at eight of these lighthouses.

See www.GreatLighthouses.com.

The lucky winner, selected from those completing our survey, will get to enjoy an exhilarating 3-night stay, for up to 5 people sharing, at their choice of lighthouse locations. The prize break must be availed of within 12 months of winning.



Great Lighthouse of Ireland



10 posters to be won

Every entry will be entered in a draw to win one of 10 fabulous posters by award-winning author and illustrator, Roger O'Reilly. The collection of almost 90 lighthouses of Ireland is available on www.IrelandPosters.ie. As shown here the posters capture the uniqueness of each lighthouse setting. They are great for framing and bring wild and natural Ireland into any room where they hang.

Winners of the posters will also be selected on Friday, October 16, and they can select which lighthouse poster they wish to receive as their prize from IrelandPosters.ie.

Terms and Conditions

- You must be aged 18 or over to participate.
- The survey must be completed online no later than Friday, October 9, 2020.
- The survey may only be completed once. Entering more than once will disqualify from the opportunity to win the prize.
- One lucky winner will be selected from the survey returns and will be selected on Friday, October 16, 2020.
- The '3-night Lighthouse Holiday Break' must be availed of within 12 months of winning the prize (dates subject to availability at the selected lighthouse).

Welcome to Ireland's South East

Contents

Ref	Attraction	See page...
1	Kilkenny Castle	7
2	Kilkenny Famine Experience	7
3	Smithwick's Experience Kilkenny	8
4	St. Canice's Cathedral & Round Tower	9
5	Dunmore Cave	9
6	Nicholas Mosse	10
7	Jerpoint Abbey	10
8	St. Mary's Church	11
9	Carlow County Museum	13
10	VISUAL	13
11	Carlow College, St Patrick's	14
12	Duckett's Grove	14
13	The Chocolate Garden of Ireland	14
14	Huntington Castle	15
15	Ferns Castle	15
16	Wells House & Gardens	15
17	Kia Ora Mini Farm	16
18	Pirates Cove	16
19	Rebellion at the National 1798 Rebellion Centre	17





Sustainable printing
practices implemented.
Please **pass on** or
recycle when finished.

Ref	Attraction	See page...
20	Enniscorthy Castle	17
21	Irish National Heritage Park	18
22	Johnstown Castle Estate, Museum & Gardens	19
23	Secret Valley Wildlife Park	19
24	Walk the Tintern Abbey Trails	20
25	Dunbrody Famine Ship Experience	21
26	Kennedy Homestead	21
27	JFK Memorial Park & Arboretum	21
28	Passage East Ferry Co. Ltd.	22
29	Hook Lighthouse	23
30	New Ross Heritage Town	24
31	Tintern Abbey	24
32	Ballyhack Castle	24
33	House of Waterford Crystal	25
34	King of the Vikings	26
35	Reginald's Tower	26
36	Medieval Museum	27
37	Bishop's Palace	27
38	Epic Tour of the Viking Triangle	27

Ref	Attraction	See page...
39	Waterford's Blue Plaques	28
40	Splashworld	28
41	Waterford Suir Valley Railway	29
42	Mount Congreve Gardens	29
43	Waterford Greenway Bike Hire and Visitor Centre	30
44	Dungarvan Castle	31
45	Criostal Na Rinne	31
46	Ardmore Open Farm & Mini Zoo	31
	Blue Flag Beaches	32
47	Lismore Heritage Centre	33
48	Robert Boyle Escape Room	33
49	The Main Guard	34
50	Tipperary Museum of Hidden History	34
51	Swiss Cottage	35
52	Mitchelstown Cave	35
	Special Discoveries —Fantastic Family Fun	36/37
	Special Discoveries—Festivals	38
	A-Z Index	39



Opening Dates and Times

Opening Dates and Times are subject to change and may vary throughout the seasons and by day of week. Establishments indicating 'open year-round' may still close, for instance, on Christmas Day. We recommend you verify dates and times directly with each featured establishment, particularly if travelling distances. Entertainments operate subject to demand and pre-booking is normally required.

Admission Rates

The admission rates quoted in this publication are the normal rates for individual adult admissions, children and families. Many of the featured attractions and entertainments do offer special rates for groups, students and seniors. The rates quoted are the 2020 rates as submitted by the individual businesses.

Errors and Omissions

Every care has been taken in the compilation of this guide to ensure its accuracy and compliance with the consumer protection laws of Ireland. Glance Promotions cannot accept responsibility for errors or omissions, but where such are brought to our attention future editions will be amended accordingly.

The South East covers an area of great beauty and features some spectacular coastline and countryside steeped in history. To help you enjoy it to its fullest, we've packed this edition with wonderful attractions, activities and experiences. Enjoy Irish heritage in Waterford, Tipperary and Kilkenny, glorious gardens in Carlow and lots of fun activities in Wexford. Plenty to see and do in the region.

Cead Mile Fáilte

A Hundred Thousand Welcomes – to Ireland's South East

Known as the 'Sunny South East', the area is filled with a variety of attractions, cultural offerings and lots of fun and interesting things to see and do. You'll find ancient Christian settlements, medieval castles and towns, rural getaways and coastal villages and resorts.

This free publication aims to enhance your visitor experience.

Plenty of choice

Variety is the essence of a good holiday and Ireland's South East certainly provides a wide range of attractions and visitor experiences from caves and gardens, museums and historic houses, castles and monastic sites, visitor farms and outdoor adventure, to galleries and lighthouses.

Detailed information is included on each attraction and visitor experience including eircodes and sat nav co-ordinates, opening times and admission rates.

Enjoy!

Finally, we do hope that you take the time to explore the rich heritage and delights of Ireland's South East and that your 'Daily Adventure' is a rewarding and enjoyable one.

Guides for other regions in Ireland are widely available.

We would welcome your feedback on the guide to info@glancepromotions.ie



This brand is a trademark of Fáilte Ireland and is used in this publications with their permission.



Published by

GLANCE

Publisher, John Rice.
Published by Glance Promotions,
Tipperary, Ireland.
Tel: 061-338588,
info@glancepromotions.ie
www.glancepromotions.ie
Design: OpticNerve.ie

Associate Member of



First European Member of



The International Association of
Visitor Information Providers

Available from



Tourist Information Offices





Kilkenny Castle

The Parade, Kilkenny City

12th Century Castle in the heart of the City



Kilkenny Castle stands dramatically in the heart of Kilkenny city. This impressive 12th century castle remodelled in Victorian times and set in extensive parklands was the principal seat of the Butler family, Marquesses and Dukes of Ormonde.

A tour of the castle will capture your imagination as you move between the Medieval Room, the Castle Gateway, and the Undercroft of the West Tower hearing about the Lords and Ladies of this most impressive home.

The central block of the castle now includes a library, drawing

room, and bedrooms decorated in 1830's splendour, as well as the beautiful Picture Gallery.

The castle has been under the care of the Office of Public Works since 1969 and many important programmes of archaeological excavation, conservation and restoration have been carried out on the grounds.

Guide Books available in English, Irish, French, German, Italian, Spanish & Polish

Audio-visual presentation located in the Medieval Room.

Visiting



Contact

Kilkenny Castle
The Parade
Kilkenny City, R95 YRK1
Tel: 056-770 4100
kilkennycastleinfo@opw.ie
www.kilkennycastle.ie
www.heritageireland.ie



Location

Kilkenny Castle is situated in the centre of the city—15min walk from MacDonagh Railway Station



SatNav: Latitude/Longitude
52.6504, -7.2492

Opening Times

Oct to Feb 09:30-17:00h
Mar to Sept 09:15-17:30h

Admission Rates

Self-guided: Adult €8, Child/Student €4, Senior €6, Family €20

Guided tour: Adult €12, Child/Student €6, Senior €10, Family €30

Information

No tickets required for Castle Kitchen Tea-room and Medieval Room. Guided tours ONLY Nov to Jan. Last admission 45mins before closing. Self guided tours Feb to Oct. Last admission 30mins before closing

Parking

Various city centre car parks within walking distance



Kilkenny Famine Experience

MacDonagh Junction Shopping Centre, Kilkenny City

FREE AV tour retelling the human stories of the Kilkenny Union Workhouse. Tour begins at the men's yard of the Workhouse and ends with a visit to the Memorial Garden and evocative bronze sculpture—the final resting place of over 970 famine victims found unexpectedly on the site in 2005. Book the tour online or go to the Customer Service Desk in the beautifully restored Shopping Centre.



Visiting



Contact

MacDonagh Junction Shopping Centre, Dublin Road (Top of John Street), Kilkenny City, R95 W8RH
Tel: 056-777 7600
info@macdonaghjunction.com
www.macdonaghjunction.com
www.kilkennyfamineexperience.com



SatNav: Latitude/Longitude
52.6552, -7.2434

Opening Times

Mon to Sat 09:30-16:30h
Sun 12:30-16:30h
Later tours available upon request

Admission Rates

Free

Information

On-site restaurants, cafés, paid parking, play areas, baby feeding suite and free WiFi



Smithwick's Experience Kilkenny

Parliament Street, Kilkenny City

 IRELAND'S
ANCIENT EAST®



Visit the home of Ireland's most popular ale

The Smithwick's Experience is one of Kilkenny's must-see attractions. Immerse yourself in the story of Smithwick's, where 300 years of history combine with extraordinary brewing innovations to create the Smithwick's Experience—a journey like no other. Learn about the fascinating history of brewing on this site and the resourceful family behind the name. Harvested from the land and seasoned by Irish history, Smithwick's has been brewed in Ireland since 1710.

Tours run daily throughout the year and are guided by local and passionate tour guides. Along the way you will discover how the craft of brewing began on this site in the 13th century and how John Smithwick first began brewing the ale we know and love today. Savour

the sensations of the brewing process and try your hand at turning the mill and stirring the mash. Your tour is topped off with a perfectly poured pint of Smithwick's. Sit back and relax in the recently refurbished bar at the home of Ireland's most popular ale.

Don't forget to pick up a gift for yourself or a friend at the Smithwick's retail store where they offer an exclusive range of merchandise, including customised, engraved glasses, clothing and giftware.

Complimentary pint of Smithwick's available to all visitors over 18 years old. Soft drinks also available.

See website for further information and to book your tour:
www.smithwicksexperience.com

A city steeped in brewing tradition

The Smithwick's Experience is one of Kilkenny's must-see attractions. Located in the heart of Kilkenny on Ireland's Medieval Mile, the daily guided-tours bring the story of Smithwick's to life through the clever mix of technology and storytelling. Relax with a pint of your favourite ale and discover for yourself what makes this one of Kilkenny's most loved attractions.

Visiting



Contact

Smithwick's Experience Kilkenny
44 Parliament Street
Kilkenny City, R95 VK54
Tel: 056-778 6377
info@smithwicksexperience.com
www.smithwicksexperience.com



Location

Just a 10 minute walk from Kilkenny Castle in the heart of Kilkenny city

SatNav: Latitude/Longitude
52.6556, -7.2541

Opening Times

Open Daily all year round: Mar to Oct 10:00–18:00h (last tour 17:00h)
Nov to Feb 11:00–17:00h (last tour 16:00h). **Tour times:** Jul & Aug every 20 mins, Mar to June, Sept & Oct every 30 mins. Nov to Feb on the hour every hour



Admission Rates

Adult €16, Senior/Student €14
Child (7–17yrs) €10, Child (U6) Free
Family (2+2) €40
Best rates available online



Information

Tour duration: 1 hour. On site retail store. Free WiFi



Parking

Paid parking at the nearby Market Yard or Market Cross car parks



Get the facts. Be **DRINKAWARE** 

Visit drinkaware.ie

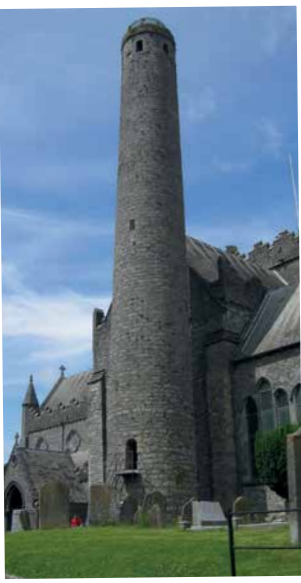




St. Canice's Cathedral & Round Tower

The Close, Kilkenny City

A great day out for all the family



Step into 900 years of Irish history. Visit Ireland's best preserved Medieval Cathedral. Walk in the footsteps of knights, saints, witch hunters and hermits. Witness the raw materials used by stonemasons in the 12th Century. Climb the Round Tower for panoramic views of Kilkenny city.

Cathedral wheelchair accessible.

Information leaflets are available in 15 languages.

Height restrictions apply to climb the tower: Minimum height 140cm.

Visiting



Contact
St. Canice's Cathedral & Round Tower
The Close, Kilkenny City, R95 V63H
Tel: 056-776 4971
info@stcanicescathedral.com
www.stcanicescathedral.com



Location
Top of Coach Road off Dean Street



SatNav: Latitude/Longitude
52.6568, -7.2572



Opening Times
Apr, May & Sept, Mon to Sat:
10:00–17:00h, Sun: 14:00–17:00h
Last admission 16:30h
Jun, Jul & Aug, Mon to Sat:
09:00–18:00h, Sun: 13:00–18:00h
Last admission 17:30h
Oct to Mar, Mon to Sat:
10:00–16:00h, Sun: 14:00–16:00h
Last admission 15:30h. **Tower** Entry depends on weather and staffing



Admission Rates
Cathedral Adult €4.50, Concession/Group (min 10) €3.50, Guided group tour €4pp. **Tower** Adult €4, Group (12 max per climb). Please telephone to confirm. Non-group Cathedral & Tower: Adult €7, Family €15 (2A+3C)



Information
Gift Shop



Parking
Street parking close by



Dunmore Cave

Ballyfoyle, Co. Kilkenny

Explore Calcite formations

History and geology blend at Dunmore Cave to give an interesting and unique situation. Consisting of a series of chambers these caves contain some of the finest calcite formations found in any Irish cave. The cave has been known to man for many centuries and is first mentioned

in the 9th century Irish Triads. Archaeological finds within the cave confirm Viking activity. Exhibitions and displays in the Visitor Centre. The caves are inaccessible for wheelchair users.

Interactive Virtual Museum consisting of the several treasures found in the Cave including one of the most significant Viking finds in the country.



Visiting



Contact
Dunmore Cave
Ballyfoyle, Castlecomer Road
Co. Kilkenny, R95 A972
Tel: 056-776 7726
dunmorecaves@opw.ie
www.heritageireland.ie



Location
10km from Kilkenny, 1km off N78 Castlecomer (road is well signposted)



SatNav: Latitude/Longitude
52.7341, -7.2477



Opening Times
Open Daily
Mar, Apr, May, Sept & Oct
09:30–17:00h
Jun, Jul & Aug 09:30–18:00h
Nov to Feb, Wed to Sun incl.
09:30–17:00h



Admission Rates
Adult €5, Senior/Group €4
Child/Student €3, Family €13





Nicholas Mosse

Bennettsbridge, Co. Kilkenny

Making beautiful tableware that gets used every day



An old mill on the riverbank is home to one of Ireland's best-loved craft workshops, Nicholas Mosse Pottery. Explore its history, watch the ceramics being formed and decorated, browse through the extensive Irish Country Shop (filled with all sorts of necessary items

and gifts for country lovers!) or book a tour to get up close to the action. Going strong after 40 years, Nick and his team of local craftspeople use an old Irish technique called 'Spongeware' to create their charming range of pottery. The pottery is also famous for its use of ecologically friendly processes, from hydro electricity to recycling and upcycling every bit of material. The café, the riverside seating and even the goats make this a must for visitors to Kilkenny.

Visiting

Contact
 Nicholas Mosse
 Bennettsbridge
 Co. Kilkenny, R95 CK71
 Tel: 056-772 7505
 sales@nicholasmosse.com
 www.nicholasmosse.com

Location
 10 mins south of Kilkenny Castle
 Exit 9 off the M9, follow signs for
 Bennettsbridge, 3 miles beyond

SatNav: Latitude/Longitude
 52.5897, -7.1853

Opening Times
 Mon to Sat, 10:00–18:00h
 Sunday 13:30–17:00h

Admission Rates
 Free Admission
 Prebooked Tours

Information
 Much loved Café and 'Seconds
 Quality' pottery area. Worldwide
 shipping

Parking
 Free parking

Jerpoint Abbey

Thomastown, Co. Kilkenny

Sculptured Cloister Arcade

An outstanding Cistercian abbey founded in the second half of the 12th century. The church's Romanesque details date from this period. In the transept chapels the visitor can see 13th to 16th century tomb sculpture. The tower and cloister date from the 15th century. The chief delight of the Abbey is the sculptured cloister arcade with unique carvings. The Visitor Centre houses an interesting exhibition.



Access for visitors with disabilities. Guided tours available. English, Irish, German, French, Italian and Spanish leaflets/guide book available.

Visiting

Contact
 Jerpoint Abbey
 Thomastown, Co. Kilkenny, R95 W99F
 Tel: 056-772 4623
 jerpointabbey@opw.ie
 www.heritageireland.ie

Location
 2.5km south west from Thomastown
 on the N9

SatNav: Latitude/Longitude
 52.5111, -7.1582

Opening Times
 Early Mar to Sept Daily 09:00–
 17:30h
 Oct Daily 09:00–17:00h
 Nov to start of Dec Daily 09:30–
 16:00h
 Dec to March Prebooked tours only

Admission Rates
 Adult €5, Senior/Group €4
 Child/Student €3, Family €13

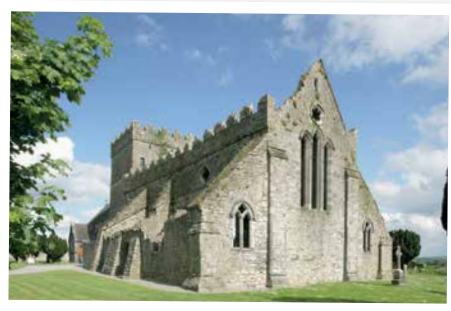
Parking
 Car & coach parking



St. Mary's Church

Gowran, Co. Kilkenny

An Exceptional Collegiate Church



Built in the late 13th century on the site of an earlier monastery this church was served by clerics who lived in the community. The church was a large and elaborate structure, with an aisled nave and a long chancel and has high quality architectural sculpture

throughout. In the late middle ages the existing tower was modified, and in the 19th century it was incorporated into the parish church which was built in place of the chancel and which now takes up about half of the building. There were also several other changes made to the church at various periods. Regular tours available

Visiting



Contact
St. Mary's Church
Gowran, Co. Kilkenny, R95 CV0Y
Tel: 056-772 6894 (open season) or
056-772 4623 (closed season)
info@heritageireland.ie
www.heritageireland.ie



Location
In the centre of Gowran town. Follow the R448 from Carlow south towards Thomastown



SatNav: Latitude/Longitude
52.6290, -7.0647



Opening Times
May 14 to Aug 26
10:00h–17:30h, Wed to Sun inclusive
Last admission 45 mins before closing



Admission Rates
Free of charge



OPW

BUY AN OPW HERITAGE CARD
& EXPLORE IRELAND'S
WONDERFUL HERITAGE



Jerpoint Abbey

Castletown House

Donegal Castle

Dún Aonghasa

Free admission to more than 45 of Ireland's finest heritage sites

Unlimited access for up to one year

€40	€30	€10	€90
Adult	Senior	Child/Student	Family

Heritage Cards can be purchased at participating heritage sites

by phone: 01-647 6592 / Lo Call 1850-600 601

Find us on Facebook



Full details: www.heritageireland.ie

carlow

through the waters of time

your holiday & adventure destination



Carlow County Museum, Carlow Town



Duckett's Grove Historic House and Walled Gardens, Kneestown, near Carlow Town



Altamont Gardens, Tullow

In County Carlow rural life is the way of life. Soaring mountains, verdant river valleys and rich rolling countryside offer the perfect backdrop for golf, trekking, angling, horse riding and canoeing. Take a trip on foot, horseback or boat and discover mystical pre-Christian monuments, ancient ecclesiastical sites, grand country houses and gardens, and picturesque rural villages all offering a glimpse of times past.



**IRELAND'S
ANCIENT EAST™**
Wander Through Time

Immerse yourself in the story of Ireland's Ancient East in County Carlow. Get off the beaten track to see, hear, touch and feel the imprints of the millennia of settlers in this county. Take your time to discover it all – Stone Age artefacts, monasteries, medieval castles and large country houses and estates.



Rialtas na hEireann
Government of Ireland



Rialtas na hEireann
Government of Ireland

Tionscadal Eireann
Project Ireland
2040



Brownshill Dolmen, near Carlow Town



The River Barrow near Borris



Huntington Castle, Clongal

059 913 0411

College Street | Carlow | Ireland | R93 H738
e: info@carlowtourism.com www.carlowtourism.com





Carlow County Museum

College Street, Carlow Town

Located in the Cultural Quarter of Carlow



Carlow County Museum is located in Carlow's Cultural Quarter, just off the town's main street, and is entered through Carlow Tourist Office. Among the four galleries view the magnificent 19th century hand carved pulpit from Carlow Cathedral, which is among the

top 100 objects to view in an Irish museum. Stand under the original gallows trapdoor from the Carlow Gaol! See the wooden smoking pipe of Captain Myles Keogh who was killed at

the Battle of Little Big Horn in 1876; items relating to John Tyndall, Carlow's 19th century scientist who discovered the greenhouse effect; and Kevin Barry's last cigarette before he was executed in 1920 at the age of 18 for his role in the Irish War of Independence.

Visiting



Contact

Carlow County Museum
College Street, Carlow Town
R93 E3T2
Tel: 059-913 1554
museum@carlowcoco.ie
www.carlowmuseum.ie



Location

Located just off Tullow Street, Carlow, sharing the same building as Carlow Library and directly next door to Carlow Cathedral



SatNav: Latitude/Longitude

52.8365, -6.9283



Opening Times

Open all year round. Mon-Sat
Jun to Aug 10:00-17:00h
Sun & B/Hols 14:00-16:30h
Sept to May 10:00-16:30h, Mon-Sat. Last admission 30 minutes before closing



Admission Rates

Free Admission



Information

Wheel chair access. Guided tours available for groups of 10+



Parking

Parking for cars in the nearby car parks. Parking for coaches in either the Bus Park on Barrack Street or in the Visual Arts Centre car park



VISUAL

Old Dublin Road, Carlow

A dynamic multi-disciplinary arts facility

Experience your world in a new way. See thought-provoking art in the largest gallery space in Ireland. An iconic arts centre in the heart of Carlow town, with four world class gallery spaces and a 320-seat performance space. VISUAL's mission is to create a space for audiences, artists and communities to

engage with, explore, and be inspired by contemporary art. Every season at VISUAL, a play space is set aside to drop in at any time to draw, cut out, make things and just have fun! The play space is always free and available when the gallery is open.



Visiting



Contact

VISUAL
Old Dublin Road
Carlow, R93 A3K1
Tel: 059-917 2400
info@visualcarlow.ie
www.VisualCarlow.ie



Location

Located in Carlow's town centre, in the grounds of Carlow College complex



SatNav: Latitude/Longitude

52.8384, -6.9300



Opening Times

Closed Mondays
Tues to Sat 11:00-17.30h
Sun 14:00-17:00h
Last admission 15 mins before closing



Admission Rates

Free admission to gallery



Information

Lennons restaurant on-site



Parking

Pay and display parking in the Town council car park





Carlow College, St Patrick's

College Street, Carlow

Hosting the public Carlow Art Collection on its ground floors, Carlow College is one of Ireland's finest public buildings located in magnificent grounds and within ten metres of VISUAL. The art collection was a voluntary initiative. Artists in the collection include: Bridget Flannery, Hilary Elmes, Frank O'Meara, Hughie O'Donoghue, Victor Zevakin and many more.



Visiting



Contact
Carlow College
College Street
Carlow, R93 T2P8
Tel: 059-913 1114
info@carlowcollege.ie
www.carlowcollege.ie



SatNav: Latitude/Longitude
52.8382, -6.9284



Opening Times
Mon to Fri 09:00–17:00h



Admission Rates
Free admission. Donations welcome



Parking
Car & Coach parking adjacent

Duckett's Grove

Historic House and Walled Gardens

Kneestown, Co. Carlow



Home to the Duckett family from the 18th to early 20th century and formerly at the centre of a 20,000 acre estate. Even in ruin, the surviving towers and turrets of Duckett's Grove form a romantic profile. Two Georgian kitchen gardens form part of the complex where the old paths have been revealed and the beds and borders reinstated.

Woodland walk and large green area for picnics.

Visiting



Contact
Duckett's Grove
Kneestown, Co. Carlow, R93 RF80
Tel: 059-913 0411 (Carlow Tourist Office)
info@carlowtourism.com
www.carlowgardentrail.com



SatNav: Latitude/Longitude
52.8588, -6.8128



Opening Times
Summer 08:00–20:30h
Winter 08:00–17:30h



Admission Rates
Free Admission



Parking
Free parking on-site

The Chocolate Garden of Ireland

Tullow, Co. Carlow

Chocolate Workshops, Parties and Afternoon Tea (booking essential) & Chocolate Mould-making (available on a drop-in basis). Café & Ice Cream parlour with Free Play Area—this is a wonderful venue for those with a taste for the finer things in life. Whatever your age, spoil your senses with awesome ice cream and chocolate, all made on-site.



Visiting



Contact
The Chocolate Garden of Ireland
Rath, Tullow, Co Carlow, R93 PY82
Tel: 059-648 1999
info@chocolategarden.ie
www.chocolategarden.ie



SatNav: Latitude/Longitude
52.7959, -6.6618



Opening Times
Mon to Fri 10:30–17:00h
W/End & B/Hols 12:00–17:30h
Oct to Mar Closing time 17:00h
Closed Dec 24 to Jan 31



Admission Rates
€13.50 pp or €12.50pp (Groups 4+)
Workshops must be prebooked
€10 per person—mould-making session (includes an ice-cream)



Information
Café & Ice Cream Parlour & Play Area
Open to Public



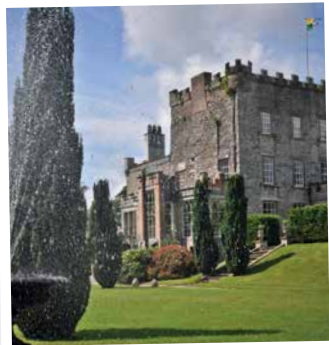


Huntington Castle

Clonegal, Co. Carlow



One of Ireland's historical gems, this amazing Castle is still lived in by descendants of the original builders. The guided tour (approx 40 mins) features the world famous Temple of Isis in the dungeons as well as Castle rooms and ghost stories. With formal gardens, an adventure playground, tearooms and giftshop, Huntington Castle is the perfect place for a day out or stay the night with historic B&B and self catering options available.



Visiting

- Contact**
Huntington Castle
Clonegal, Co. Carlow, Y21 K237
Tel: 053-937 7160
info@huntingtoncastle.com
www.huntingtoncastle.com
- SatNav: Latitude/Longitude**
52.6905, -6.6492
- Opening Times**
Castle, Gardens & Playground:
Open Daily May to Sept
See website for further details
- Admission Rates**
Gardens only Adult €6
Senior/Student €5, Child (U12) €3
Castle Tour & Gardens
Adult €10, Senior/Student €9
Child (U12) €5
Usual concessions apply
- Parking**
Ample free parking (including Coaches) on-site

Ferns Castle

Ferns, Co. Wexford

This castle was built in the 13th century, possibly by William, Earl Marshall. Originally, the castle formed a square, with large corner towers. Only half of the castle now remains. The most complete tower contains a fine circular chapel, with carved ornament. The tower also has several original fireplaces and a vaulted basement. Archaeological excavations revealed a rock-cut ditch outside the castle walls.



Visiting

- Contact**
Ferns Castle
Ferns, Co. Wexford, Y21 D892
Tel: 053-936 6411
jerpointabbey@owp.ie
www.heritageireland.ie
- SatNav: Latitude/Longitude**
52.5905, -6.4992
- Opening Times**
May 07 to Sept 30
Daily 10:00-17:00h
Sept 30: 10:00-14:00h
Last admission 45 mins before closing
- Admission Rates**
Free of charge
- Parking**
Car parking available

Wells House & Gardens

Gorey, Co. Wexford

Waiting to be explored is Wells House and Gardens, located in the lush green countryside of Co Wexford just 20 minutes south of Gorey. The house and gardens were designed by renowned architect Daniel Robertson famed for his work in Powerscourt Estate! With something for all generations Wells House and Gardens is the ideal choice for a day out! Voted Best Family Day Out by TodayFM listeners.



Visiting

- Contact**
Wells House & Gardens
Ballyedmond, Gorey
Co. Wexford, Y25 CF96
Tel: 053-918 6737
info@wells.house.ie
www.wells.house.ie
- SatNav: Latitude/Longitude**
52.528448, -6.346021
- Opening Times**
10:00-18:00h (May to September)
11:00-16:00h (October to April)
- Admission Rates**
Entry €10 per car
- Information**
Restaurant, Playground, Animal Farm, House Tour, Woodland Walks, Gardens, Craft Courtyard
- Parking**
Full car park on-site



Kia Ora Mini Farm

Gorey, Co. Wexford

Family fun filled farm

Kia Ora Mini Farm is a family run open farm in Gorey, Co. Wexford where children can get up close and personal with some feathered and furry friends. Adults can relax in the coffee shop or enjoy the outdoor seating while the children enjoy themselves and learn about the animals.

Facilities include NEW REAL DIGGERS, Go Kart Track, Footgolf, Crazy Maze, Fire Engine Ride, Football Pitch, Milking Cow etc. The farm is fully wheelchair accessible and perfect for school tours/ large groups.

A dedicated party room is available with a throne

for the birthday boy or girl to make them feel extra special. Keep an eye on the website for Kia Ora Mini Farm's special events at Easter, Halloween and Christmas with fun for all the family.



Visiting



Contact
Kia Ora Mini Farm
Courteencurragh, Gorey
Co. Wexford, Y25 RX60
Tel: 053-942 1166
Mob: 086-878 8424
kiaoraminifarm@gmail.com
www.kiaoraminifarm.ie



Location
Between the town of Gorey and seaside village of Courtown Harbour off the R742. Exit 23 off the by-pass



SatNav: Latitude/Longitude
52.6762, -6.2565



Opening Times
Please see website
www.kiaoraminifarm.ie for opening times



Admission Rates
Adults €8. Child €8
Groups welcome



Information
Coffee shop with snacks and hot drinks



Parking
Free on-site parking



Pirates Cove

Gorey, Co. Wexford

Pirates of all ages will enjoy swashbuckling fun



Ahoy Mateys! Come along to Pirates Cove for a great family day out. Enjoy the sub tropical gardens, when you challenge your crew to a game of 18-hole mini golf. Be the captain of your own bumper boat as you travel around the beautiful lagoon but beware of the waterfalls. Walk on water in the bubble rollers while the little scallywags enjoy the paddleboats. Funcaves soft play

area is always a hit with the under 10s.

Don't forget the 10 Pin Bowling, Electric children's Go-karts, the Games Arcade and the Spinning Compass Casino for older visitors! Cove Café serves up feasts fit for Captain Jack Cove

himself. For a bit more fun, take a ride on the eco-friendly Pirates Cove Express at Courtown's Seafront or WIN great prizes at the Ticket Redemption Counter in the Arcade with exciting new games.

See website for more details about the different packages on offer as well as birthday party and group packages. So bring your crew along for an adventure not to be missed!

Visiting



Contact
Pirates Cove
Courtown Harbour, Gorey
Co. Wexford, Y25 WD85
Tel: 053-942 5555
info@piratescove.ie
www.piratescove.ie



Location
Take Exit 23 off the M11 and follow signs for Courtown. At the crossroads in the village turn right, Pirates Cove is approx. 200 metres on the right hand side



SatNav: Latitude/Longitude
52.6431, -6.2328



Opening Times
Jun, Jul & Aug Daily 11:00–22:00h
Refer to website for Sept to May opening times



Admission Rates
Each activity varies in price
See website for rates



Information
Café on site



Parking
On-site parking available





Rebellion

at the National 1798 Rebellion Centre

Enniscorthy, Co. Wexford

Rebellion is here...

Fanned by flames of Revolution in America and France, the events of 1798 in Ireland are forever etched in blood on the annals of Irish history. Vividly re-told in an exciting interpretation of events, the "Rebellion Experience" at the multi-award winning National 1798 Rebellion Centre is not to be missed.

Meet key figures of the Rebellion, including John Shehan (The Croppy Boy), Tom the Devil and General Gerard Lake, and experience the poignant 4-D audio visual interpretation of the Battle of Vinegar Hill. Join the FREE weapons and cookery demonstrations throughout the week (Details available on website).

While here, why not also visit VINEGAR HILL BATTLEFIELD, site of the most famous battle of the 1798 Rebellion. Its current peace, serenity, and spectacular views belie its background as one of the bloodiest battlefields in Irish history. 20,000 men, women, and children faced 10,000 well-armed and well-trained members of the Crown Forces, in a battle that lasted only four hours, but left 1,500 dead and a county distraught.



Visiting



Contact

The National 1798 Rebellion Centre
Enniscorthy, Co. Wexford, Y21 PY03
Tel: 053-923 7596
info@1798centre.ie
www.rebellion.ie



Location

30 mins from Rosslare on N11; 40 mins from Waterford on N30; 1hr 45 mins from Dublin Airport on N11



SatNav: Latitude/Longitude

52.4967, -6.5694



Opening Times

Mon to Fri 09:30-17:00h
Sat & Sun Closed. Seasonal weekend opening Jun to Sept, check website
Last entry to exhibition is 45 mins before closing
Vinegar Hill Battlefield:
Year round from 10:00h to dusk



Admission Rates

Adult €7, Student/Senior €4
Child (Over 5yrs) €3, Family €20
Entry to Vinegar Hill Battlefield: Free



Information

Craft and book shop on-site
Newly opened 'Coffee Kiosk'



Parking

Ample parking on-site for cars and coaches. Laneway to Vinegar Hill battlefield is not accessible by 52-seater coaches



Enniscorthy Castle

Enniscorthy, Co. Wexford

A View from the Keep



The award winning Enniscorthy Castle, in the heart of Enniscorthy town, was built in the 13th century, and has long been home to Anglo-Norman knights, English Earls and local merchant families.

Be sure to visit the dungeon and see the rare medieval wall art—The Halberdier, dress up as a knight or lady of the house, marvel at the works of the world-renowned furniture designer Eileen Gray, and climb the steps to the

battlements at the top of the castle to discover the amazing views of Vinegar Hill Battlefield, Enniscorthy town, and the surrounding flora and fauna.

Visiting



Contact

Enniscorthy Castle, Castle Hill
Enniscorthy, Co. Wexford, Y21 AW90
Tel: 053-923 4699
info@enniscorthycastle.ie
www.enniscorthycastle.ie



Location

Situated in the heart of Co. Wexford
40mins drive from Waterford on N30. 20 mins drive from Wexford on N11



SatNav: Latitude/Longitude

52.5014, -6.5671



Opening Times

Mon to Fri 09:30-17:00h
Sat/Sun, Bank Hols 12:00-17:00h
Entry to castle up until 16:30h each day



Admission Rates

Adult €6, Student/Senior €5
Family €12, Child (Over 5) €3



Information

Craft and book shop on-site
Hot & cold beverages and snacks available



Parking

Parking available in local public car parks (within 2 mins. walk)





Irish National Heritage Park

Ferrycarrig, Co. Wexford

 IRELAND'S
ANCIENT EAST®



Journey to a place where history and legends come to life

A visit to the Irish National Heritage Park is like no other you can imagine. Surprises wait around every turn as you explore 35 acres of this remarkable heritage trail. Experience one of the renowned tours in the company of a costumed guide. From campsite to ringfort, from Water Mill to Fulacht Fiadh, from Crannóg to Viking house, every activity is an unexpected adventure into 9,000 years of Irish History and Heritage. Homesteads, places of ritual, burial mounds and long forgotten remains will enlighten the casual visitor and inspire the scholars.

Within the park, children have a unique opportunity to experience Ireland's heritage

along with fun activities including; panning for gold, wattle your own house, rock art, 2 adventure playgrounds and an activity scramble. Special programmes and family fun days are here to entertain and delight children with archery, axe throwing or a Hawk Walk with our Resident Falconer Jim.

Learn a new skill by partaking in an exciting course, these courses are lead by traditional craft workers and local artists. (Course pre-booking required) Stay a night in our Medieval Ringfort and experience the life, for a farming family of 1,500 years ago. An experience you will never forget, whether you stay an hour, an afternoon or for the night.

Visiting



Contact

Irish National Heritage Park
Ferrycarrig
Co. Wexford, Y35 X313
Tel: 053-912 0733
reception@irishheritage.ie
www.irishheritage.ie



Location

Wexford Town



SatNav: Latitude/Longitude

52.3482, -6.5171



Opening Times

May to Aug: 09:30–18:30h
Sept to April: 09:30–17:30h
Please allow approx 2 hours for a visit to the park
Last admission 15:00–16:00h



Admission Rates

Adult €10.50, Senior €9, Student €8
Family €25/€30



Information

Fulacht Fiadh Restaurant and Craft shop



Parking

Parking on-site



Fulacht Fiadh Restaurant and Craft Shop

Irish hospitality and Wexford charm combine with all the modern facilities to make your visit a time to remember.

Before you leave, visit the craft and book shop with its wide range of designer clothing and quality Irish crafts. You can also sample fine Irish cuisine in the restaurant, eat out on the terrace and savour the sensation of the Crannog and Lake, awash in the colours and fragrances of Ireland's past.





Johnstown Castle Estate, Museum & Gardens

Johnstown, Co. Wexford

A gem of Gothic Revival architecture with lush grounds



Visit the new experience at Johnstown Castle Estate, Gardens and Museum which offers visitors a '3 in 1' attraction including the Gothic Revival castle with adjoining servants' tunnel (one of the longest in the country), the Irish Agricultural Museum with

its 19 exhibitions exploring Irish rural life and the spectacular lakes, walled gardens and sculptures. This great 19th century castle in its beautiful setting was designed by the Victorian architect Daniel Robertson who is responsible for many projects

in the southeast of Ireland including Powerscourt in County Wicklow. If time allows visit the gift shop and café or just relax by the castle lakeside with its Gothic towers, waterfall and statues and watch the peacocks strut by.

Visiting



Contact
Johnstown Castle Estate
Johnstown
Co. Wexford, Y35 HP22
Tel: 053-918 4671
info@johnstowncastle.ie
www.johnstowncastle.ie



Location
Johnstown Castle is a 10 minute drive from Wexford town
Follow signage from the N25



SatNav: Latitude/Longitude
52.2933, -6.5023



Opening Times
Open Daily
Mar 17 to Oct 31, 09:00-17:30h
Nov 01 to Mar 16, 09:00-16:00h



Admission Rates
Gardens & Museum Self-Guided/
Guided
Adult €9/€13
Senior/Student €7/€10
Child (5-16yrs) €4/€6
Child (U5) Free
Family (2+4) €24/€35



Information
On-site Gift Shop, Café and
Woodland Play Ground



Parking
Parking for cars and coaches



Secret Valley Wildlife Park

Enniscorthy, Co. Wexford

Discover the wonders of Secret Valley Wildlife Park!!

At Secret Valley Wildlife Park they strive to make everyone's visit one they won't forget. Providing a once in a lifetime chance to encounter exotic animals in a safe environment with beautiful surrounds. From bottle-feeding the hungry goats to getting up close and personal with lemurs, there is something for every age. The keeper talks are fun and educational and, with 14 acres of the valley open to the public including a recreational area and traditional farmyard, there is never a dull moment at the park.



Visiting



Contact
Secret Valley Wildlife Park
Coolnacon, Clonroche, Enniscorthy
Co. Wexford, Y21 DF85
Tel: 087-205 0069
info@secretvalley.ie
www.secretvalley.ie



Location
First turn left after Clonroche, 1 mile down the road on the right. The Park is 15 minutes from Enniscorthy town



SatNav: Latitude/Longitude
52.4257, -6.7558



Opening Times
Apr to Aug everyday 10:00-18:00h
Sept to Mar weekends 11:00-17:00h
weekdays 11:00-16:00h



Admission Rates
Check website for details



Information
Debit/Credit cards accepted



Parking
Free parking on-site





Walk the Tintern Abbey Trails

New Ross, Co. Wexford



Immerse yourself in nature

Tintern Abbey, at Saltmills, New Ross, Co. Wexford, is a Cistercian Abbey, founded circa 1200 by William, the Earl Marshall. It is a seasonal attraction, open daily late March to end October (dates are subject to change, check www.HeritageIreland.com). There is an admission fee to the Abbey. Part of the Wexford Walking Trail network, the walks are free—and there are four to choose from. To start each walk, turn right at the entrance to Tintern Abbey and continue to Trailhead.

Gardener's Trail

This short easy walk (0.9km) starts at Tintern Abbey. Cross the Tintern River via the old stone bridge and enjoy the mixed woodland containing 200-year-old beech trees. About half way, discover the Colclough Walled Garden (admission charge) which once supplied the Colclough family who lived in the abbey.

Tintern Demesne Trail

This 2.4km walk along the Tintern River and around the demesne boundary shows nature's bounty, including fine beech, oak, and chestnut trees as well as kingfishers, egrets, buzzards, red squirrels, stoats, and bats.

Foxboro Trail

The 3.5km trail starts at Tintern Abbey and follows the Tintern River through deciduous and coniferous forest. The walk has some climbs, rough underfoot and obstacles.

Bannow Bay Trail

Starting at the Abbey, this 7.2km trail meanders through the 'Deal Park' and on to the 'Brickfield' where the bricks to construct the Walled Garden were made. Your walk will take in the old estate village of Saltmills. This area is rich in bird life.

Information and Safety Notice:

We strongly advise that you check out www.WexfordWalkingTrail.ie for more details of these and other walks. Their website also provides downloadable maps, advice on safety, footwear and clothing tips, and the suitability of walks for different abilities.

Visiting



Contact

Tintern Abbey
Saltmills, New Ross
Co. Wexford, Y34 KR64
Tel: 051-562 650
tinternabbey@opw.ie
www.heritageireland.ie



Location

16km south of New Ross off the R734 road or 29km from Wexford off the Wexford to Ballyhack road R733



SatNav: Latitude/Longitude

52.2371, -6.8380



Opening Times

Walks open all year round
Abbey Opening times
Mar 28 to Oct 29
Daily 09:30–17:00h
Jun, Jul & Aug Daily 10:00–17:30h
Last admission 45 mins before closing



Admission Rates

Walking Trail Free of Charge
Abbey Adults €5, Senior/Group €4
Child/Student €3



Information

Tearoom open daily





Dunbrody Famine Ship Experience

The Emigrant Trail, New Ross, Co. Wexford

An authentic reproduction of an 1840's emigrant vessel providing a world class interpretation of the famine emigrant experience. Incorporating guided tour, costumed performers and themed exhibitions, the story is brought to life, providing a unique insight into the bravery of Irish people during the famine. Restaurant offering panoramic views of the river Barrow and the Dunbrody Famine Ship, extensive menu available all day.



Visiting



Contact

Dunbrody Famine Ship Experience
New Ross, Co. Wexford, Y34 A786
Tel: 051-425 239
info@dunbrody.com
www.dunbrody.com



SatNav: Latitude/Longitude

52.3935, -6.9477



Opening Times

Every Day, All Year Round 09:00–18:00h. Last tour Apr to Sept 17:00h Oct to March 16:00h



Admission Rates

Adult €11, Senior €9, Child/Student €6
Family (2+1 <12) €23, (2+2 <12) €26
(2+3 <12) €32. Group rates apply
Joint tickets available with Kennedy Homestead



Information

Restaurant, Gift Shop, Ship's Tour
all fully wheelchair accessible



Parking

Coach and Public parking nearby

Kennedy Homestead

The Emigrant Trail, New Ross, Co. Wexford

Follow the rise from Famine Emigrant to President! The Kennedy Homestead, birthplace of President John F. Kennedy's great grandfather, celebrates the story of five generations of the Kennedy dynasty. A state of the art visitor centre housing an interpretive exhibition allows visitors to follow the fortunes of the most famous Irish emigrant families. Facilities include a unique collection of Kennedy memorabilia and AV display.



courtesy of PJ Browne Photography

Visiting



Contact

Kennedy Homestead
Dunganstown, New Ross
Co. Wexford, Y34 KW31
Tel: 051-388 264
info@kennedyhomestead.ie
www.kennedyhomestead.ie



SatNav: Latitude/Longitude

52.3467, -6.9872



Opening Times

Open Every Day, All Year. 09:30–17:30h. Last admission 17:00h



Admission Rates

Adult €8, Senior €7, Child/Student €6
Family (2+1) €20, (2+2) €22, (2+3) €25
Group Rate on request. Joint tickets
available with Dunbrody Famine Ship



Information

Souvenir Shop. Disabled access



Parking

On-Site Car Park. Coach Parking

JFK Memorial Park & Arboretum

The Emigrant Trail, New Ross, Co. Wexford

Dedicated to the memory of John F. Kennedy, President of the United States who was tragically assassinated in 1963, the same year that he visited his ancestral home in New Ross. The arboretum is a plant collection of international standing, covering 252 hectares on Slieve Coillte featuring 4,500 types of trees and shrubs. It is also home to an exhibition which chronicles President Kennedy's time in the White House.



Visiting



Contact

JFK Memorial Park & Arboretum
New Ross, Co. Wexford, Y34 KA48
Tel: 051-388 171
jfkarboretum@opw.ie



SatNav: Latitude/Longitude

52.3211, -6.9337



Opening Times

Open daily year round except Good Friday & Christmas Day, Oct to Mar 10:00–17:00h. April 10:00–18:30h May to Aug 10:00–20:00h Sept 10:00–18:30h



Admission Rates

Adult €5, Senior €4, Student €3
Family €13. Group Rate on request



Information

Tearoom (seasonal) & Picnic Area



Parking

Private on-site car park



Passage East Ferry Co. Ltd.

Passage East, Co. Waterford



Welcome to The Sunny South East

Passage East Ferry Company operate a continuous Car Ferry Service across the River Suir linking the villages of Ballyhack in County Wexford and Passage East in County Waterford.

This service, provided for over 30 years, offers a shortcut to visitors touring the Southeast of Ireland where you can enjoy scenic views of the Suir Estuary.

The following list of attractions will help give you, the visitor, some idea of how much the Southeast has to offer. The Irish National Heritage Park, J. F. Kennedy Arboretum, the must see Hook Lighthouse, Tintern Abbey, Loftus Hall if you dare, Kilmore Quay a beautiful fishing village and lots more in County Wexford. The House of Waterford Crystal, The Viking



**PASSAGE
EAST FERRY**

Triangle which incorporates three museums, Suir Valley Railway, Waterford Greenway, Seaside town of Tramore, and the scenic fishing villages of Dunmore East & Ardmore with its famous Round Tower are just some of the attractions in County Waterford.

A continuous ferry service is in place and tickets can be purchased directly on board or via the website. The average crossing time is 5 minutes. Motorhomes, Commercial vehicles up to 3 tons, Cars, Motorbikes, Bikes and Pedestrians are all welcome.

Discount Fares

If you plan on staying in the area for an extended break why not avail of the multi crossing discounted ticket, car and passengers cost as little as €3.50 per trip on the €42.00 discount ticket, available onboard.

Visiting



Contact

Passage East Ferry Company Ltd.
Barrack Street, Passage East
Co. Waterford, X91 C52E
Tel: 051-382 480
info@passageferry.ie
www.passageferry.ie



Location

38km from Wexford Town R733
13km from Waterford City R783



Sat Nav: Latitude/Longitude

Ballyhack: 52.2444, -6.9678
Ballyhack Eircode Y34 A316
Passage East: 52.2395, -6.9732
Passage East Eircode X91 C52E



Sailing Times

First Sailing:
Weekdays 07:00h (all year)
Sundays & Public Holidays 09:30h (all year)
Last Sailing:
Sept 01 to May 31: 20:00h
Jun 01 to Aug 31: 21:00h



Fares

Cars: Single €8. Return €12
Tickets can be purchased online at
www.passageferry.ie or on board the Ferry





Hook Lighthouse

Hook Peninsula, Co. Wexford



The oldest original operating lighthouse in the world

Enjoy a tour of Hook Lighthouse, one of the most popular visitor attractions in county Wexford. Loved by families year round this 800 year old lighthouse has many accolades, chief amongst them; it is the oldest original operating lighthouse in the world... yes, the world!

Hook Lighthouse was voted in Ireland's top 10 favourite attractions and Ireland's favorite hidden gem in the 2018 Irish Travel Awards. Climb the 115 well-worn steps of the tower and meet the life-size hologram of St Dubhán, a monk who tells of perishing nights spent with fellow monks in the 5th century warning sailors against dangers with a beacon they kept alight on the headland.

On the second floor meet another life-size figure, the Knight William Marshal, who tells the tale of his empire in the Southeast of Ireland. How he built Kilkenny Castle, Tintern Abbey and the Hook lighthouse tower in the 13th century in order to guide shipping to his port at nearby New Ross. On the third floor you can hear tales of times gone-by of life as a lighthouse keeper in Ireland. And when you reach the tower balcony enjoy the sea breeze on your face and experience the newly opened watch room offering a panoramic observatory across the estuary. Guided tours of the lighthouse tower are on offer 7 days a week sharing with visitors one of the greatest experiences on Ireland's Ancient East.

Events and Festivals at Hook Lighthouse

Bespoke and private tours are also on offer and don't miss out on the regularly announced Sunset and Sunrise Tour Experiences. Hook Lighthouse also has an artist in residence, Rose Finn who offers children and adults art workshops year round. For all the details see www.hookheritage.ie.

For updates on news, events and festivals at the lighthouse follow @HookLighthouse on Facebook, Twitter & Instagram or call 051-397055.

Visiting



Contact

Hook Lighthouse
Fethard-on-Sea, Hook Peninsula
Co. Wexford, Y34 YC60
Tel: 051-397 055 / 397 054
info@hookheritage.ie
www.hookheritage.ie



Location

50km from Wexford via Wellington Bridge and Fethard-on-Sea
29km from Waterford via the Passage East Car Ferry and Ramsgrange. 38km from New Ross via Campile or Fethard-on-Sea



SatNav: Latitude/Longitude
52.1247, -6.9289



Opening Times

Visitor Centre:

Open Year Round,
daily 09:30–17:00h

Guided Tours of Lighthouse Tower:

Tours every half hour daily from 09:30–17:00h and last up to 1 hour Jul & Aug late opening, last tour at 19:00h. Last admission 30 mins before closing time



Admission Rates

Adult €10, Senior/Student €9
Family (2+2 aged 5-18) €28
Family (2+3 aged 5-18) €30. US Free
Group rates available on prebooked Guided tours. Pre-booking essential
SUNRISE & SUNSET TOUR €45pp



Information

Gift Shop, Café, Bakery, Art Exhibits, Artists workshop, Art classes, and Maritime Displays. Garden Picnic areas and Toilet facilities. Free WiFi



Parking

Free car and coach parking





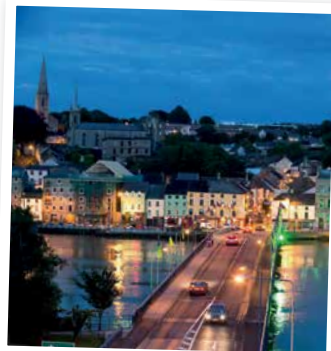
New Ross Heritage Town

New Ross, Co. Wexford

On the banks of the majestic River Barrow, New Ross is full of cultural and historic surprises, beautiful shopfronts and quaint laneways.

The town is home to the most famous Irish American, President John Fitzgerald Kennedy.

Visitors to New Ross can see the spectacular Dunbrody Famine Ship sit proudly on the quayside —take a tour and discover its fascinating history.



Visiting



Contact

New Ross Heritage Town
New Ross
Co. Wexford, Y34 CF64
Tel: 051-421 284
www.wexfordcoco.ie



SatNav: Latitude/Longitude
52.3962, -6.9472



Information

New Ross has numerous shopping options and cafés & restaurants with a range of dining options



Parking

Car and coach parking available throughout the town

Tintern Abbey

New Ross, Co. Wexford

A Cistercian Abbey, founded c. 1200 by William, the Earl Marshall, and named after Tintern in Wales. The remains consist of a nave, chancel, tower, chapel and cloister. It was partly converted into living quarters after 1541, and further adapted over the centuries. The Abbey was occupied by the Colclough family from the 16th century until 1960s.



Visiting



Contact

Tintern Abbey
Saltmills, New Ross
Co. Wexford, Y34 KR64
Tel: 051-562 650
tinternabbey@opw.ie
www.heritageireland.ie



SatNav: Latitude/Longitude
52.2371, -6.8380



Opening Times

Mar 13 to May 31
Daily 09:30–17:00h
Jun, Jul & Aug
Daily 10:00–17:30h
Sept 01 to Nov 03
Daily 09:30–17:00h
Last admission 45 mins before closing



Admission Rates

Adult €5, Senior/Group €4
Child/Student €3, Family €13

Ballyhack Castle

Ballyhack, Co. Wexford

Ballyhack Castle is located on a steep slope in a commanding position overlooking Waterford estuary. The castle, a large tower house, is thought to have been built c.1450 by the Knights Hospitallers of St. John, one of the two great military orders founded at the beginning of the 12th century at the time of the Crusades.



Visiting



Contact

Ballyhack Castle
Ballyhack
Co. Wexford, Y35 TN56
Tel: 051-389 468
jerpointabbey@opw.ie
www.heritageireland.ie



SatNav: Latitude/Longitude
52.2458, -6.9677



Opening Times

May 09 to Aug 26
Daily 09:30–17:00h Sat to Wed incl
Last admissions 45 mins before closing



Admission Rates

Free of charge



Parking

Parking in nearby village





House of Waterford Crystal

The Mall, Waterford City

 IRELAND'S
ANCIENT EAST®



A Breathtaking Experience

Waterford Crystal is located in the heart of Waterford City. The highlight of any visit, the guided Factory Tour gives all visitors an up close and personal insight into the centuries-old tradition of Waterford Crystal making.

Feel the heat of the furnace and marvel at the skills of the Craftsmen during your guided tour, which takes approximately 50 minutes.

After the tour, indulge your passion for the world's most famous Crystal in the lavish Retail Store housing the largest collection of Waterford Crystal found worldwide. The exhibition of Sporting Trophies and

Statement Pieces is also a must-see attraction.

During your visit, take time to relax and enjoy breakfast, lunch or afternoon tea in the Crystal Café.



Living Histories

Why not get your photograph taken with some spectacular showpieces in the Visitor Retail Experience. A visit to tour the Factory, gives visitors the opportunity to learn about the amazing skills required to produce beautiful handcrafted crystal.

Visiting



Contact

House of Waterford Crystal
The Mall, Waterford City, X91 FXN4
Tel: 051-317 000
houseofwaterfordcrystal@fiskars.com
www.waterfordvisitorcentre.com



Location

Waterford City



SatNav: Latitude/Longitude
52.2593, -7.1073



Opening Times

March: Tour Mon to Sat 09:00–15:15h, Sun 09:30–15:15h
Store Mon to Sat 09:00–17:00h
Sun 09:30–17:00h

April to October: Tour Mon to Sat 09:00–16:15h, Sun 09:30–16:15h
Store Mon to Sat 09:00–18:00h
Sun 09:30–18:00h

November to February: Tour Mon to Fri 09:30–15:15h. Store Mon to Sat 09:30–17:00h, Sun 12:00–17:00h (Nov/Dec only)



Admission Rates

Adult €15, Senior €13, Student €12
Child (10–18 yrs) €7, Child (U10) Free
Family €40



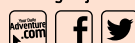
Information

Coffee Shop, Factory Tour and Crystal Retail Store



Parking

Parking adjacent





King of the Vikings

Viking Triangle, Waterford City



The World's First Viking 3D Virtual Reality Adventure

Exciting and dynamic 3D Virtual Reality experience available in 3 languages and lasting 30 minutes, housed in an exact replica of a Viking house found in Waterford. The Viking house has been recreated within the atmospheric walls of a medieval monastery where once stood a Viking fort. The visitor is met by a Viking comb-maker, regaled with stories about life in Viking Waterford and is invited to don a special magical helmet (3D Oculus Rift headsets) that will transport them back 1100 years and they come face to face with the great heroic and legendary Viking leader Reginald, founder of the city of *Veðrafjörðr*, (Waterford) and King of Waterford and York.

Only 100 steps from Reginald's great Viking tower, which displays Treasures of Viking Age Waterford and a full-size replica Viking longship.



Visiting



Contact

King of the Vikings
Viking Triangle
Waterford City, X91 A0PF
Tel: 076-110 2646
info@kingofthevikings.com
www.kingofthevikings.com



Location

Located in the heart of Waterford's Viking Triangle



SatNav: Latitude/Longitude

52.2603, -7.1062



Opening Times

Mar 13 to end of Oct
Open daily, 10:30-17:00h



Admission Rates

Adult €10
Child (U12) €5



Information

Please email or phone to pre-book your slot. Tours available in English, French & German



Parking

Public car parking on the Quay and in Bolton Street Car Park



Reginald's Tower

Viking Triangle, Waterford City

A circular defence tower



Reginald's Tower is named after the Viking leader that founded Waterford in 914.

The lower two floors of the current stone structure were built by the Normans after their capture of Waterford in the late 12th century, replacing the earlier wooden Viking tower, while the upper two floors are of late 15th century date. Originally part of the city's defences it protected the vital river approach to Waterford and has been in continuous use since that time. The tower has served as a mint, arsenal, prison, residence and the city museum. Today visitors can learn the story of this incredible monument by taking a guided tour or enjoy the exhibition within that also incorporates the Viking Treasures of Waterford.

Visiting



Contact

Reginald's Tower
The Quay, Waterford City
Co. Waterford, X91 Y880
Tel: 051-304 220
reginaldstower@opw.ie
www.heritageireland.ie



Location

Located in Waterford city at the eastern end of the city quay



SatNav: Latitude/Longitude

52.2604, -7.1054



Opening Times

Remedial works are ongoing at Reginald's Tower. It is expected that these works should be completed by the end of May 2020 and the site will open shortly afterwards. See website www.heritageireland.ie for updates



Admission Rates

Adult €5, Senior/Group €4
Child/Student €3, Family €13



Information

Exhibition, Audio visual presentation



Parking

Public parking available nearby





Medieval Museum

Viking Triangle, Waterford City



Treasures of Medieval Waterford

The only museum in Europe to be built over two National Monuments, the 13th century Choristers Hall and the 15th century Mayor's Wine Vault. Don't miss the unique Cloth of Gold Vestments and the Great Charter Roll, as seen by Queen Elizabeth II on her state visit to Ireland.



Visiting

- Contact**
Medieval Museum
Viking Triangle
Waterford City, X91 K10E
Tel: 0761-102 501
museumreception@waterfordcouncil.ie
www.waterfordtreasures.com
- SatNav: Latitude/Longitude**
52.2599, -7.1069
- Opening Times**
Open daily, year-round. Mon to Fri:
09:15-18:00h (Sept to May 17:00h)
Sun & BHols opens at 11:00h (Sat 10:00h)
- Admission Rates**
Adult €10, Senior/Student €8, Family €20. Combined Ticket with Bishop's Palace: Adult €15, Senior/Student €14, Family €25. Child (U12) free
- Information**
Gift shop on-site
- Parking**
Public parking available nearby

Bishop's Palace

Viking Triangle, Waterford City



Treasures of Georgian Waterford

This magnificent Georgian building hosts the oldest surviving piece of Waterford Crystal in the world dating back to 1789, the only surviving Napoleon Bonaparte 'mourning cross', which was one of twelve produced upon his death in 1821 and the fantastic 4D Masterpieces in Glass exhibition tracing the story of glass making in the city from the 1700's.



Visiting

- Contact**
Bishop's Palace
Viking Triangle
Waterford City, X91 E279
Tel: 0761-102 650
museumreception@waterfordcouncil.ie
www.waterfordtreasures.com
- SatNav: Latitude/Longitude**
52.2595, -7.1077
- Opening Times**
Open daily, year-round. Mon to Fri:
09:15-18:00h (Sept to May 17:00h)
Sun & BHols opens at 11:00h (Sat 10:00h)
- Admission Rates**
Adult €10, Senior/Student €8, Family €20. Combined Ticket with Medieval Museum: Adult €15, Senior/Student €14, Family €25. Child (U12) free
- Information**
Café on-site
- Parking**
Public parking available nearby

Waterford Treasures

Epic Tour of The Viking Triangle

Viking Triangle, Waterford City



Treasures of Viking Waterford

The award winning all-weather guided Epic Tour of the Viking Triangle takes in 6 national monuments within an hour, covering 1100 years of Waterford's history from the Vikings to the Victorians, which includes lots of photo opportunities along the way. A great way to get an overview of Waterford's history.



Visiting

- Contact**
Waterford Treasures
Medieval Museum
Viking Triangle, Waterford, X91 K10E
Tel: 0761-102 501
bookings@waterfordcouncil.ie
www.waterfordtreasures.com
- SatNav: Latitude/Longitude**
52.2595, -7.1077
- Opening Times**
May 01 to Sept 30
Daily Tours: 12:00 & 14:00h
Group tours please contact
bookings@waterfordcouncil.ie as
group bookings are available all year
round
- Admission Rates**
Adults €7, Child (U12) Free
- Parking**
Bolton Street Car Park within 5 mins



Waterford's Blue Plaques

Waterford City

A trail of discovery

As you walk through the streets of Waterford you will notice round blue plaques with inscriptions. These descriptions tell you of important events or people connected with Waterford and the building/place you are passing by.

Waterford Civic Trust has installed over 40 Blue Plaques throughout the city to commemorate links between a particular location, a famous person or event. Follow all or part of the trail and you'll get a great insight into Waterford's rich and diverse heritage.

You'll discover, for example, some of what the Vikings built; where King Richard landed in 1394 at the head of the largest armada to sail into an Irish port; and the house where William Hobson, the first governor of New Zealand, was born.



Visiting



Contact

Pick up a Blue Plaque Trail Map for the City at the Discover Ireland Tourist Centre
120 Parade Quay
The Quay, Waterford, X91 KC3V
Tel: 051-875 823
www.WaterfordCivicTrust.ie
www.visitwaterford.com



Splashworld

Tramore, Co. Waterford

Wild & wonderful fun for all!

Tramore's only indoor water attraction. Experience the thrills of the wet & wild waves, indoor/outdoor water slides, bubble pool, paddle pool, water cannons, and splash slide. There's fun for all ages in the 25m swimming pool. Family discounts available. Fitness and health enthusiasts can take advantage of a fully equipped Gym and fitness studio. Fitness classes are available daily for all abilities. Enjoy some relaxation time in the steam room. For all public pool times and daily fitness classes, visit the website: www.splashworld.ie Splashworld is located adjacent to Tramore Amusement Park and Tramore's 5km blue flag



beach. There's something for everyone in Tramore's seaside resort. Splashworld—making memories for generations since 1993.

Visiting



Contact

Splashworld
Railway Square, Tramore
Co. Waterford, X91 P8EW
Tel: 051-390 176
info@splashworld.ie
www.splashworld.ie



Location

Off the R675 before the Promenade



SatNav: Latitude/Longitude
52.1619, -7.14715



Opening Times
Open Year Round
Public Times Vary Seasonally



Admission Rates

Entry prices vary
visit www.splashworld.ie for rates



Parking

Free customer parking on-site





Waterford Suir Valley Railway

Kilmeadan, Co. Waterford



All Aboard to Experience the Magic of Rail!



Board the train at Kilmeadan Station, hear the whistle blow and take off on an exciting journey through the countryside, taking in panoramic views of the River Suir, get a glimpse in to Mount Congreve Gardens, make a wish as you pass through the Fairy Wood and continue on to Carriganore beside Waterford Greenway. Travelling at 15km per hour, the

journey lasts 40 minutes. Saturday trips last 10 minutes longer. Come prepared with a jacket if you want to sit in the open carriages. Enclosed seating also available. This is a fun experience for all ages and all facilities are wheelchair accessible. Refreshments are available in the Whistle Stop Café. Special events in the year include Choo Choo Fun Days, Nature Express, the Spooky Express at Halloween and Santa Express at Christmas. Check the website for timetables and further information.



Visiting



Contact
Waterford Suir Valley Railway
Kilmeadan Station, Kilmeadan,
Co. Waterford, X91 DH93
Tel: 051-384 058
info@wsrailway.ie
www.wsvrailway.ie



Location
Located 10km from Waterford City
On N25 towards Cork take Carrick
Road (R680) off Carrick Road
Roundabout. From Cork take 1st
exit off Roundabout on to R680
Kilmeadan Station is on the left

SatNav: Latitude/Longitude
52.2461, -7.2475



Opening Times
April & Sept:
Mon to Sat 11:00–15:00h
Sun 12:00–16:00h
May 01 to Aug 31:
Mon to Sat 11:00–16:00h
Sun 12:00–17:00h



Admission Rates
Adult €10, Child €5
Senior/Student €9
Family (2+1) €23, €3 per extra child
Discounts for groups 20+



Information
Coffee shop and souvenirs

Parking
Car and coach parking



Mount Congreve Gardens

Kilmeaden, Co. Waterford

Meander the 70 acres of spectacularly designed gardens, with 16kms of pathways throughout the woodland gardens, including a 4-acre walled with a vegetable garden in continual use for over 250 years. Hidden treasures include a Chinese pagoda, water features and many exotic plants from all over the globe. Described as 'A World of Gardens' Mount Congreve boasts one of the largest private collection of plants in the world.



Visiting



Contact
Mount Congreve Gardens
Mount Congreve Estate, Kilmeaden
Co. Waterford, X91 PX05
Tel: 051-384 115
admin@mountcongreve.com
www.mountcongreve.com



SatNav: Latitude/Longitude
52.2376, -7.2124



Opening Times
Mar–May: Thurs to Sun & Bank/
Hols 11:00–17:30h. Jun–Aug: Daily
11:00–17:30h. Sept–Dec: Thurs to Sun
& Bank/Hols 11:00–16:30h
Last entry 1 hour before closing



Admission Rates
Adult €7, Senior/Student €6
Child (U16) €3, Child (U4) Free

Parking
Free parking on-site

Gaeltacht na nDéise

Scenic Irish speaking district (Gaeltacht) located between the two vibrant coastal towns of Dungarvan and Ardmore. Promoting the Irish language, culture, traditional music and dance.
www.deise.ie





Waterford Greenway Bike Hire and Visitor Centre

Dungarvan, Kilmacthomas, Waterford



Explore the Waterford Greenway

The Greenway is 46km long from Dungarvan to Waterford, taking approximately 5 hours (leisurely cycle) to include stopping off halfway for lunch in Kilmacthomas Village or the Coach House Coffee, Union Workhouse which is 2 hours from Dungarvan Town, and 2 hours from Waterford City. After 10km from Dungarvan (halfway to Kilmacthomas) you will find O'Mahoney's Pub-Durrow, which is just after Ballyvoyle Tunnell (Coffee/Toilet Facilities) and 10km from Waterford, (halfway to Kilmacthomas), you will find Mount Congreve House & Gardens, and also Kilmeaden Waterford & Suir Valley Railway, (Coffee/Toilet Facilities). During the Summer months there will be various pop-up-shops along the route. For Winter months phone or visit website for opening hours and bus times.

Free Shuttle Bus

The Shuttle Bus can only be used for customers that hire bikes from Waterford Greenway Bike Hire. You can only book the Shuttle Bus once you drop off your bike, you cannot pre-book same. You can decide during your cycle where to drop off your bikes. 5 Shuttle Buses operate and leave every hour from each Depot.

BOOK: Via website: waterfordgreenwaybikeshire.com or phone central booking: 051-295 955.

BIKE HIRE DEPOTS: Open every day from 9am to 6pm: Sexton Street, Abbeyside, Dungarvan, (just beyond the traffic lights with the beginning of the Greenway literally just around the corner); Kilmacthomas, The Union Workhouse adjacent to the Coach House Coffee, which is directly onto the Greenway; Hanover Street in Waterford, opposite the Bus Station on the Quay and just above Dooleys Hotel.

BOOKING REQUIREMENTS: Booking in advance is advisable, via website: waterfordgreenwaybikeshire.com or central booking line: 051 295955. Let them know your pick-up location, what bikes you require, ladies/ gents/ kids/ attachments, i.e trailers, seats, tow alongs or an electric bike.

Visiting



Contact

Waterford Greenway Bike Hire and Visitor Centre
The Famine Workhouse
Union Road, Kilmacthomas Co. Waterford, X42 DP68
Tel: 051-295 955
info@waterfordgreenwaybikeshire.com
www.waterfordgreenwaybikeshire.com



Location

Depots at Sexton Street-Dungarvan, The Famine Workhouse - Kilmacthomas & Hanover Street-Waterford city



SatNav: Latitude/Longitude

Dungarvan: 52.0926, -7.6146
Eircode X35 FT61
Kilmacthomas: 52.2013, -7.4066
Eircode X42 DP68
Waterford City: 52.2626, -7.1151
Eircode X91 RY2Y



Opening Times

Daily 09:00-18:00h



Admission Rates

Adult bike €25, Electric bike €45
Child bike €10—20 inch suitable for 6-8yr olds. 24 inch suitable for 9-12 yr olds. Tow Along Bikes (Free) suitable for 4-6 yr olds. Trailers (Free) suitable from new born up to 4yr and Seats (Free) are suitable up 3yrs



Information

Further details and booking available on-line



Parking

Waterford: Parking on the Quay. Kilmacthomas: Free carpark adjacent to the Greenway & Coach House Coffee. Dungarvan: Free carpark behind Eurospar in Abbeyside





Dungarvan Castle

Dungarvan, Co. Waterford

Dungarvan Castle, built at the mouth of the River Colligan, is an Anglo-Norman fortification founded in 1185. From here, soldiers could command the narrow strip of land to the south of the Comeragh Mountains. The castle consists of a polygonal shell keep with an enclosing curtain wall, a corner tower and a gate tower.

The barracks is now restored and houses an informative exhibition on the history of the castle.



Visiting



Contact

Dungarvan Castle
Castle Street, Dungarvan
Co. Waterford, X35 DV58
Tel: 058-48144
charlesfort@opw.ie
www.heritageireland.ie



SatNav: Latitude/Longitude
52.0889, -7.6162

Opening Times

May 28 to Sept 30
Daily 10:00–18:00h
Last admission 45 mins before closing



Admission Rates

Free of Charge

Criostal na Rinne

Irish Crystal Studio & Craft Shop

An Rinn, Dungarvan, Co. Waterford



IRELAND'S
ANCIENT EAST®

Experience behind-the-scenes access with master craftsman Eamonn Terry, creating hand cut crystal in the Waterford Gaeltacht. Marvel at the skill of the glasscutter during a free demonstration in the workshop. Enjoy fascinating historic stories of local glassmaking from the 16th century to the present day. The designs are stories made physical. More than just useful objects, they create meaningful connection with Ireland's rich culture, history, nature and language.



Visiting



Contact

Criostal na Rinne
Baile na nGall Beag, An Rinn
Dungarvan, Co. Waterford, X35 NH28
Tel: 058-46174
info@criostal.com
www.criostal.com



SatNav: Latitude/Longitude
52.0480, -7.5683

Opening Times

Open Mon to Fri 09:30–17:30h
Sat 10:00–17:00h, Sun 12:00–17:00h
Oct to Feb weekends by appointment



Admission Rates

Free



Information

Free WiFi, Tax-free shopping
Worldwide shipping



Parking

Free on-site parking

Ardmore Open Farm & Mini Zoo

Ardmore, Co. Waterford

A family attraction like no other, with a wide range of exotic and rare breed animals, as well as a host of reptiles. Dedicated petting times and informative talks. Playgrounds, zipline, soccer pitch, karting, climbing pyramid and maze. Luxurious glamping pod facility available from Summer 2018. Full restaurant offering home cooked food and yummy desserts.



Visiting



Contact

Ardmore Open Farm & Mini Zoo
Ballykilmurry, Ardmore
Co. Waterford, P36 RH66
Tel: 024-876000
info@ardmoreopenfarm.ie
www.ardmoreopenfarm.ie



SatNav: Latitude/Longitude
51.9692, -7.7643

Opening Times

Open daily during Summer months
Off-Season opening hours available
on www.ardmoreopenfarm.ie



Admission Rates

Check website for family rates and pricing
www.ardmoreopenfarm.ie



Parking

Ample car & coach parking available
on-site



Blue Flag Beaches

Waterford & Wexford



Enjoy a day at the beach

With such an extensive coastline along the two counties of Waterford & Wexford you would expect to find quality beaches and you won't be disappointed. With many beaches meeting the Blue Flag standard you are certain to be never far from a great day out at the beach.

The miles of beaches available are great for swimming, exploring rock pools and all sorts of beach fun. There are plenty of water activities to be enjoyed from sub-aqua, sailing, diving, water skiing, rowing, canoeing, land yachting and surfing.

The Blue Flag is an international award for beach excellence. It is presented to beaches which have excellent water quality, which provide a range of

services and visitor facilities, and which fulfil other specified criteria including environmental management, litter control and education.

If you enjoy the great outdoors, there's no better place for a holiday. There's so much to see and do!



Visiting



Contact

For up-to-date listings of current Blue Flag Beaches please visit www.blueflagireland.org



SatNav: Latitude/Longitude

Waterford
 Ardmore: 51.9521, -7.7208
 Clonea: 52.0966, -7.5411
 Tramore: 52.1573, -7.1350
 Dunmore Strand: 52.1508, -6.9932
 Councillors Strand Dunmore East: 52.1545, -6.9911

Wexford

Carne: 52.1995, -6.3509
 Rosslare: 52.2731, -6.3857
 Curragloe: 52.3870, -6.3589
 Ballinesker Beach: 52.3994, -6.3579
 Morristown: 52.5091, -6.2412
 Courtown: 52.6448, -6.2263
 Ballymoney North Beach: 52.6802, -6.2015



The Blue Flag Programme

The Blue Flag is an international award for beach excellence. It is presented to beaches which have excellent water quality, which provide a range of services and visitor facilities, and which meet other specified criteria including environmental management, litter control and education.





Lismore Heritage Centre

Lismore, Co. Waterford

Small town with huge community spirit



A special place to visit and relax in the lush green landscape of west Waterford. Set at the foot of the Knockmealdown mountains, this town has been a haven for travellers since the early 600's. Connect with the monks of old, Norman's, Vikings and Bishops who all

passed through this town and left their mark in different ways to make the town what it is today. New for 2020, immerse yourself in a 360 degree virtual reality experience of the rooms inside Lismore Castle at Lismore Heritage Centre. Here you

will learn about the historical figures who shaped Lismore town through the ages, from entrepreneurs and adventures, Hollywood stars and world leaders who have spent time in this beautiful home overlooking the majestic Blackwater River.

Visiting



Contact

Lismore Heritage Centre
Lismore, Co. Waterford, P51 TP26
Tel: 058-54975
info@lismoreheritage.ie
www.discoverlismore.com



Location

Situated on the N72 between Waterford and Mallow/Killarney



SatNav: Latitude/Longitude

52.1358, -7.9377



Opening Times

Mon to Fri 09:00–17:30h
Open Weekends mid-Mar to Dec
Sat 10:00–17:00h & Sun 12:00–17:00h



Admission Rates

The Lismore Castle Experience:
Adult €10, Senior/Student €8
Child (3–16yrs) €5, Family (2+2) €25



Information

Heritage Centre and Tourist
Information Point
Free WiFi



Parking

Free Parking



Robert Boyle Escape Room

Lismore, Co Waterford

Puzzle over conundrums set for you!

Try out the new Robert Boyle Escape Room at Lismore Heritage Centre, you and your team will have one hour to Escape the Room and save Boyle's Alchemy Box.

Robert Boyle, Father of Modern Chemistry was born here in Lismore Castle.

The Game: Robert Boyle has been busy trying to solve many of the C17th science's most puzzling questions. Boyle's nemesis, the fraud, Vincenzo Falcone believes that Boyle has discovered a mysterious ingredient which can turn base metals into gold and give humans the gift of immortality.

Falcone knows that Boyle is away on important business in the city today and Falcone will be here in 60 minutes to search Boyle's study for his secret Alchemy Box. Can you find it before Falcone gets here? Teams of 2–6 players.



Visiting



Contact

Lismore Heritage Centre
Lismore, Co. Waterford, P51 TP26
Tel: 058-54975
info@lismoreheritage.ie
www.discoverlismore.com



Location

Situated on the N72 between Waterford and Mallow/Killarney



SatNav: Latitude/Longitude

52.1358, -7.9377



Opening Times

Mon to Fri 09:00–17:30h
Open Weekends mid-Mar to Dec
Sat 10:00–17:00h & Sun 12:00–17:00h. By appointment outside these hours



Admission Rates

Team of 2: €25pp
Team of 3: €22.50pp
Team of 4: €17.50pp
Team of 5: €14.50pp
Team of 6: €12.50pp



Information

Heritage Centre and Tourist
Information Point
Free WiFi



Parking

Free Parking





The Main Guard

Clonmel, Co. Tipperary

Take a journey through the decades



The Main Guard is one of the oldest surviving civic buildings, and one of the earliest examples of classical public architecture in Ireland. The dramatic landmark was built by James Butler, Duke of Ormond, in 1675 as the courthouse for

the Palatinate of administrative area of County Tipperary.

In 1715, the Palatinate jurisdiction was extinguished. In about 1810, the ground floor, a loggia of open arches, was converted into shops, a basement excavated and additional floors inserted.

It has been recently restored to its original form and the open arcade of sandstone columns is once again a feature of the streetscape. Inside visitors can enjoy two impressive exhibitions.

Visiting



Contact
The Main Guard
Sarsfield Street, Clonmel
Co. Tipperary, E91 P7Y8
Tel: 052-612 7484
mainguard@opw.ie
www.heritageireland.ie



Location
Forms one end of the main street—Sarsfield Street is in Clonmel town



SatNav: Latitude/Longitude
52.3529, -7.7015

Opening Times
Mar 26 to Sept 26 (Closed Mondays)
Daily 09:00–17:00h
Last admission 16:15h
Restricted hours in closed season please contact The Rock of Cashel, or email rockofcashel@opw.ie



Admission Rates
Free of Charge



Information
During the closed season contact the Rock of Cashel
062-61437
rockofcashel@opw.ie

Parking
Car parking close to site



Tipperary Museum of Hidden History

Clonmel, Co. Tipperary

Come see for yourself!

Tipperary Museum of Hidden History is a state-of-the-art visitor experience in the centre of Clonmel, in the heart of Ireland's Ancient East. Completely re-imagined and redesigned, the new Museum brings Tipperary's rich hidden history vividly to life through characters, stories and significant collection pieces. Immerse yourself in stories of castles and conquests, courage, superstition, murder and death. Explore tales of two worlds, from rural life in 19th century Tipperary to the Big Houses



on the Suir Valley. Come face to face (literally) with Oliver Cromwell. Learn about a host of Tipperary heroes from the world of sports and entertainment. This multi-sensory experience is a must-see on your journey into Ireland's Ancient East. Expect to be surprised and intrigued by what you find!

Visiting



Contact
Tipperary Museum of Hidden History
Mick Delahunty Square, Clonmel
Co. Tipperary, E91 Y891
Tel: 0761-065 252
museum@tipperarycoco.ie
www.hiddenhistory.ie



Location
Located in the heart of Clonmel town in Mick Delahunty Square



SatNav: Latitude/Longitude
52.3555, -7.6988

Opening Times
Tues to Sat 10:00–16:30h
Closed: Sun, Mon, Bank Hols, Mar 17, Easter & Christmas



Admission Rates
FREE admission
For tailored workshops & tours see website



Information
Experience Clonmel's boutiques, cafés and restaurants all within a short walk of the museum

Parking
Paid parking in nearby local public car park. At the museum there are 2 bus spaces and 2 wheelchair parking spaces





Swiss Cottage

Cahir, Co. Tipperary

Step back in time



A delightful “cottage orné” built in the early 1800s by Richard Butler, 1st Earl of Glengall to a design by the famous Regency architect John Nash. The cottage was inspired by nature, and its unusual and

rustic features include a distinctive thatched roof while its external woodwork resembles branched trees.

The nature theme is continued throughout the former guest cottage’s internal furnishings containing a graceful spiral staircase and some elegantly decorated rooms.

The wallpaper in the Salon manufactured by the Dufour factory is one of the first commercially produced Parisian wallpapers. Situated on an elevated site with access by stone steps.

Visiting



Swiss Cottage
Ardinnan Road, Cahir
Co. Tipperary, E21 T224
Tel: 052-744 1144
swisscottage@opw.ie
www.heritageisland.ie



Location
2km south of Cahir Town off R670—road to Ardinnan



Opening Times
Mar 13 to Oct 24
Daily 10:00–18:00h
Oct 25 to Nov 01
Daily 09:30–17:00h



Admission Rates
Adult €5, Senior/Group €4
Child/Student €3, Family €13



Information
Admission by guided tour only
Please note that this is a very busy site and visitors may experience a delay during the Summer months



Parking
Public car & coach parking close to site



Mitchelstown Cave

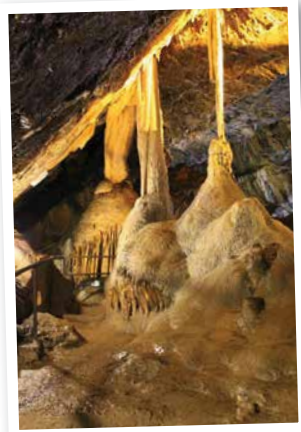
Cahir, Co. Tipperary

One of Europe’s Major showcaves

Mitchelstown Cave is one of the largest and most complex cave systems in Ireland. On the guided tour you will follow ancient passageways and visit massive caverns in which you are surrounded by indescribable cave formations, stalactites, stalagmites and huge calcite pillars. Guided tours are conducted through half a mile of this world famous cave.

Entry to cave is by guided tour, min 2 adults required for tour.

On May 3rd 1833, Mitchelstown Caves was discovered by Michael Condon who was quarrying limestone when he accidentally dropped his crowbar into a crevice. He pulled out some rocks and boulders to retrieve the bar



and found himself looking down into a vast series of underground passages, chambers and caverns.

Visiting



Contact
Mitchelstown Cave
Burncourt, Cahir
Co. Tipperary, E21 H920
Tel: 052-746 7246
visit@mitchelstowncave.com
www.mitchelstowncave.com



Location
Located midway between the towns of Cahir and Mitchelstown. Take Exits 11 or 12 on the M8 Motorway



SatNav: Latitude/Longitude
52.3057, -8.1045



Opening Times
Daily Feb 02 to May 13 & Sept to Nov
10:00–16:00h
Daily May 14 to Aug 10:00–16:45h
W/ends only Dec & Jan 10:00–16:00h
Closed Dec 21–25. Open from Dec 26



Admission Rates
Adult €10, Child (0–12) €3.50
Family (2+2) €22
Min. 2 adults required for tour
Group rates available



Information
On site toilet facilities



Parking
Free parking for cars and coaches



SPECIAL Discoveries

— in the South East —

Family Fun Activities



Bunmahon Playground

Bunmahon, Co. Waterford
Sat Nav 52.1392, -7.3684

Keep the little ones entertained as you travel the Scenic Copper Coast Driving Route from Dungarvan to Tramore. This playground is located close to the beach and is the ideal location for a fun filled hour or two!

www.visitwaterford.com



Copper Coast Scenic Drive

Co. Waterford

The Copper Coast drive winds its way along the coast between Tramore and Dungarvan. Marvel at the secret beaches and hidden coves, the perfect backdrop to your family picnic.

www.visitwaterford.com



Curracloe Beach

Curracloe, Co. Wexford
Sat Nav 52.3881, -6.3643

What better way to spend a few hours than on one of the sunny south east's best loved beaches. Whether you are an avid swimmer, a sandcastle genius or simply wish to hear the roll of the sea, this is one of the countries finest beaches.

www.visitwexford.ie



Dunmore Adventure

The Harbour, Dunmore East, Co. Waterford, X91 KD40
Sat Nav 52.1489, -6.9928

Land & water activities for families, friends, groups & individuals. Aquapark, Kayaking, Team Building, Sailing, SUP, Archery, Climbing, Caving, Café onsite. Prebooking is essential.

Tel: 051-383 783 www.dunmoreadventure.com



Gáirdín an Ghorta (The Famine Garden)

Newmarket, Co. Kilkenny, R95 NP40
Sat Nav 52.4744, -7.2627

A garden commemorating the Great Famine, which saw one million Irish people die and another million emigrate. The path through the garden is a metaphor for Irish history and is synonymous with the journey of the Irish people.

Tel: 086-839 4349 www.discoverireland.ie



**Ireland's South East has fantastic family fun activities.
We highlight just some of the activities for you to choose from
during your visit to the South East.**



Seal Rescue Ireland

Courtown Harbour, Gorey, Co. Wexford, Y25 TP93
Sat Nav 52.6492, -6.2284

Seal Rescue Ireland's visitor centre and animal hospital are open 7 days a week for free public tours. Come meet the seal pups, learn their stories, and get involved in marine conservation!

Tel: 053-942 4980/087-195 5393
www.sealrescueireland.org



Wexford Arts Centre

Cornmarket, Co. Wexford, Y35 X5HF
Sat Nav: 52.3396, -6.4644

For all those culture vultures out there a trip to Wexford Arts Centre is not to be missed. With a large range of exhibitions, workshops, theatre, music and comedy events—there is something for all ages to enjoy!

Tel: 053-912 3764 www.wexfordartscentre.ie



Wexford Wild Fowl Reserve

North Slob, Ardavan, Co. Wexford
Sat Nav 52.3570, -6.4222

Immerse yourself in the un-spoilt beauty of this wild fowl reserve. The resident wildlife can be viewed from an 8m tall observation tower. The on-site visitor centre hosts exhibitions and an audio-visual show.

Tel: 076-100 2660 www.wexfordwildfowlreserve.ie



The opening days and times of these venues can vary. If you are travelling distances to visit them, it is always advisable to check times online.



Looking for laughs, music, food, and entertainment?
Look no further than Ireland's South East with an array of festivals to choose from.



Cats Laughs Comedy Festival

28th May–01st Jun 2020

Laughter is the best medicine and that is certainly the case for those who make an annual pilgrimage to Kilkenny to hear some of the best comedians creating a “laugh out loud” atmosphere! A weekend not to be missed!

www.thecatlaughs.com



Clonmel Junction Arts Festival

04th–12th Jul 2020

This week-long arts festival is an array of music, theatre, street performance, comedy, visual art, food, drink and much, much more. Be sure to pay a visit to this lively town and embrace the festival atmosphere.

www.discoverireland.ie



Waterford Spraoi Int. Street Art Festival

02nd–05th Aug 2020

Come along and enjoy a spectacular event where street performers from all over the world come together to entertain and delight visitors to the Viking City.

www.spraoi.com



2020 National Ploughing Championships

15th–17th Sept 2020

The 89th National Ploughing Championships will take place in Ballintranee, Fenagh, Co. Carlow. The event is not just for ploughing or machinery enthusiasts and features something for just about every member of the community.

www.npa.ie



Wexford Festival Opera

20th Oct–01st Nov 2020

Since it was first launched back in 1951 this opera festival has gone from strength to strength and is now ranked amongst the world's leading opera festivals. It brings thousands of opera lovers to the region each year.

www.wexfordopera.com



Your Daily Adventure

Ireland's South East

A–Z Index

Ref	Attraction	See page...	Ref	Attraction	See page...
46	Ardmore Open Farm & Mini Zoo	31	36	Medieval Museum	27
32	Ballyhack Castle	24	52	Mitchelstown Cave	35
37	Bishop's Palace	27	42	Mount Congreve Gardens	29
	Blue Flag Beaches	32	30	New Ross Heritage Town	24
11	Carlow College, St Patrick's	14	6	Nicholas Mosse	10
9	Carlow County Museum	13	28	Passage East Ferry Co. Ltd.	22
13	The Chocolate Garden of Ireland	14	18	Pirates Cove	16
45	Criostal Na Rinne	31	19	Rebellion at the National 1798 Rebellion Centre	17
12	Duckett's Grove	14	35	Reginald's Tower	26
25	Dunbrody Famine Ship Experience	21	48	Robert Boyle Escape Room	33
44	Dungarvan Castle	31	23	Secret Valley Wildlife Park	19
5	Dunmore Cave	9	3	Smithwick's Experience Kilkenny	8
20	Enniscorthy Castle	17		Special Discoveries—Fantastic Family Fun	36/37
38	Epic Tour of the Viking Triangle	27		Special Discoveries—Festivals	38
15	Ferns Castle	15	40	Splashworld	28
29	Hook Lighthouse	23	4	St. Canice's Cathedral & Round Tower	9
33	House of Waterford Crystal	25	8	St. Mary's Church	11
14	Huntington Castle	15	51	Swiss Cottage	35
21	Irish National Heritage Park	18	50	Tipperary Museum of Hidden History	34
7	Jerpoint Abbey	10	31	Tintern Abbey	24
27	JFK Memorial Park & Arboretum	21	10	VISUAL	13
22	Johnstown Castle Estate, Museum & Gardens	19	24	Walk the Tintern Abbey Trails	20
26	Kennedy Homestead	21	41	Waterford Suir Valley Railway	29
17	Kia Ora Mini Farm	16	43	Waterford Greenway Bike Hire and Visitor Centre	30
1	Kilkenny Castle	7	39	Waterford's Blue Plaques	28
2	Kilkenny Famine Experience	7	16	Wells House & Gardens	15
34	King of the Vikings	26		Ireland's South East Map of Attractions	4/5
47	Lismore Heritage Centre	33			
49	The Main Guard	34			



MAKERS OF THE

Authentic Claddagh Ring™

TAX
FREE
SHOPPING
FOR NON EU RESIDENTS

SHOP
ONLINE



CLICK &
COLLECT



VISIT OUR STORES

25 MAINGUARD ST. GALWAY ☎ 091 562 310 2 GRAFTON ST. DUBLIN 2 ☎ 01 607 4018

f FB.COM/CLADDAGHJEWELLERS 📧 SHOP@THECLADDAGH.COM

WWW.THECLADDAGH.COM



LEGEND ^{OF} the
CLADDAGH RING™

VISITOR CENTRE GALWAY



GALWAY'S NEW AND EXCITING
CLADDAGH RING VISITOR CENTRE AND WORKSHOP

Learn about the origins of Galway's iconic Claddagh ring which dates back over 300 years.

Come and see where the Authentic Claddagh Ring™ is made.

26 SHOP STREET, GALWAY.

🌐 WWW.CLADDAGHLEGEND.COM f FB.COM/CLADDAGHLEGEND